

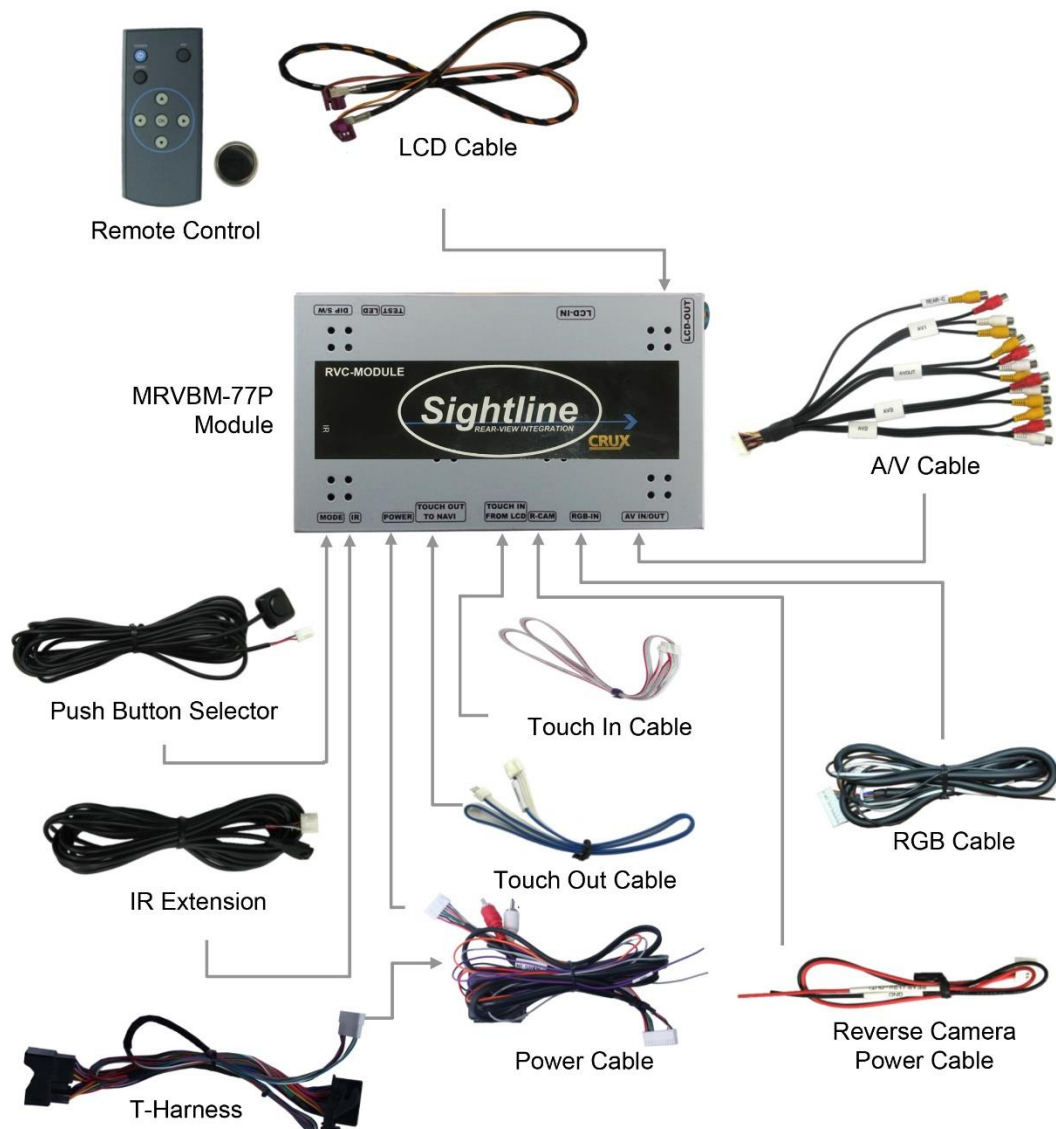
### PRODUCT FEATURES:

- User friendly onscreen display.
- Switch modes via the iDrive controls.
- With Dynamic Parking Assistance System (PAS).
- Adds 3 Audio/Video Inputs.
- Supports PIP (Picture in Picture) display.
- Provides power for a backup camera.

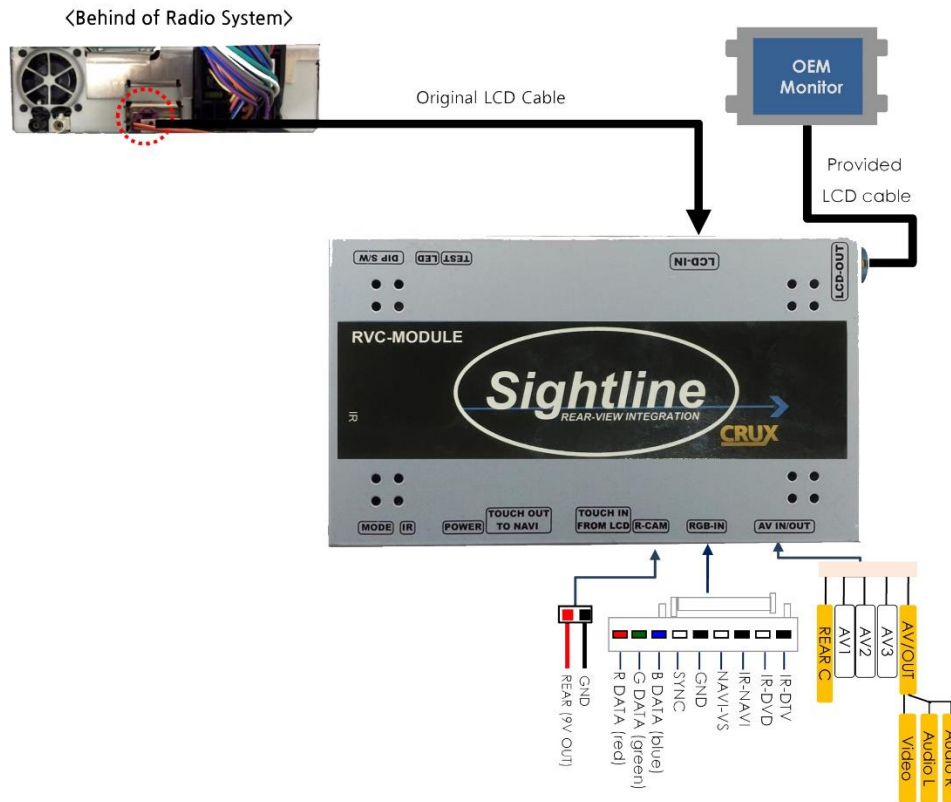
### NOTES:

- Supports radios with 6.5", 8.8" and 10.2" screens.

### PARTS INCLUDED:



**INSTALLATION DIAGRAM:**



**LVDS CONNECTION:**



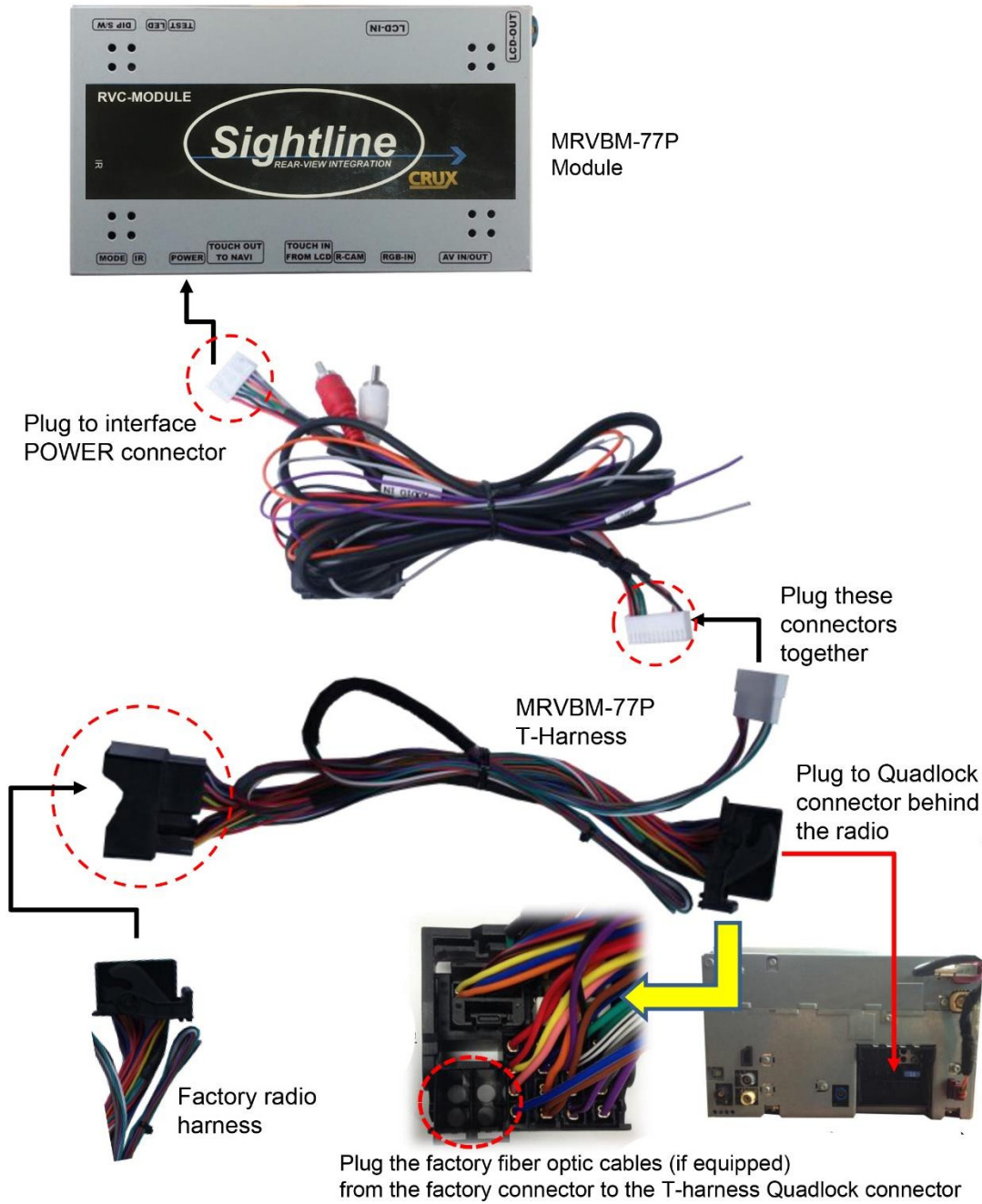
1. Unplug the factory LCD cable from the monitor. Plug one end of the LCD cable provided in the kit to the monitor and the other end to LCD-OUT on the interface.



2. Connect the original LCD Cable to LCD-IN on the interface.



**POWER HARNESS CONNECTION:**



## DIP SWITCH SETTINGS:

- . Example DIP S/W usage
- Use input mode : A/V2, A/V3
- Use original navigation
- External rear camera



**ON : DOWN / OFF : UP**  
**Default : DIP S/W 8 OFF**

- ▷ DIP S/W : 1,2 → ON (hide INPUT MODE)
- ▷ DIP S/W : 3 → OFF (A/V2 display)
- ▷ DIP S/W : 4 → OFF (A/V3 display)
- ▷ DIP S/W : 5 → OFF (8.8" & 10.2")
- ▷ DIP S/W : 6 → OFF (Standard GUI model)
- ▷ DIP S/W : 7 → ON (display aftermarket reverse camera)
- ▷ DIP S/W : 8 → OFF

PIN	Function	Dip S/W Selection
1	Display RGB input	ON : RGB mode skip OFF : RGB mode display
2	Display A/V 1	ON : A/V 1 mode skip OFF : A/V1 mode display
3	Display A/V 2	ON : A/V 2 mode skip OFF : A/V2 mode display
4	Display A/V 3	ON : A/V 3 mode skip OFF : A/V3 mode display
5	Setup of monitor size	ON : 6.5" OFF : 8.8", 10.2"
6	Setup of Rear camera mode (F20) *** F56 is not compatible	ON : 3D GUI model OFF : Standard GUI model
7	Setup of rear camera use	ON : CVBS4 OFF : MAIN
8		N.C

### NOTES:

1. For the new 2 Series, X3, X4 (with 8.8" monitor) and i8, set DIP switch # 5 and 6 to ON.
2. Unplug the power harness before changing the setting of the DIP switches.

## REMOTE CONTROL FUNCTIONS:

	<b>KEY</b>	<b>FUNCTION</b>
	Power & PIP	Not Used
	Menu	Activating Factory Menu
	Enter	Make a Selection / Change the Image Display
	▲	Move UP
	▼	Move DOWN
	◀	Move LEFT (Press for 2 seconds to Access Factory Mode)
	▶	Move RIGHT (Press for 2 seconds to Reset User Data)



**ON SCREEN DISPLAY SETTINGS:**

**FACTORY mode** – Press ◀ button 2 seconds long on the remote control.

▪ **Setup for car model**



▪ **Setup for navigation**



☐ **UTIL1 - CAR MODEL**

Selecting model of the car  
 F20 : 1, 3, 5, 7 series 6.5" & 8.8"  
 New UI 8.8" 10.2"  
 F56 : New MINI, New X3 6.5"  
 F20 NEW : 1, 3, 5, 7 series 6.5" & 8.8" 2016 ~  
 F56 NEW : New MINI, New X3 6.5" 2016~  
 Select NEW model if you have an issue of a flickering screen with cars with a production date of Oct. 2016 and newer.



☐ **IMAGE**

Adjust navigation position and size

H-POSITION : Move display horizontally  
 V-POSITION : Move display vertically  
 H-SIZE : Adjust navi size horizontally

☐ **UTIL1 – NAVI MODEL**

Select navigation model

- DEFAULT
- LS901
- PAPAGO
- QROI
- KD900
- ACCLASS
- GI5000A
- GI8000N
- HDMI
- WP9200
- MYVI
- NAV\_506TP
- ICUBE
- GN\_3000
- NAVIST
- PAPAGO
- SMITH\_PAD

Go to the FACTORY/IMAGE setting to adjust the position and size of the navigation screen after setting the navigation system.



**FACTORY mode – Press ◀ button 2 seconds long on the remote control.**



**□ UTIL1 – AVOUT SELECT**

Selecting background sound  
After  
returning navigation or original  
mode

DEFAULT : Selecting AV sound  
just before changing  
navigation or original mode  
from the AV mode

AV 1~3 : Sound of the selected  
AV source 1~3



**□ UTIL1 - FACTORY RESET**

FACTORY MODE RESET

**FACTORY mode – Press ◀ button 2 seconds long on the remote control.**



**□ UTIL2 - I\_DRV REMOTE**

Choose DTV and DVD model  
to be control I\_DRV function

LI-1DISC  
NEC-6DISC  
USER(when using IR MEMORY)

- **Select DVD model: Setting on AV1 Mode**
- **Select DTV model : Setting on A/V2 mode**



**□ UTIL2 - I\_DRV CONTROL**

Selecting whether to use I\_DRV  
function or not

ON / OFF

A/V1 : Control DVD Remote control  
UI  
A/V2 : Control DTV Remote control  
UI



**FACTORY mode** – Press ◀ button 2 seconds long on the remote control.

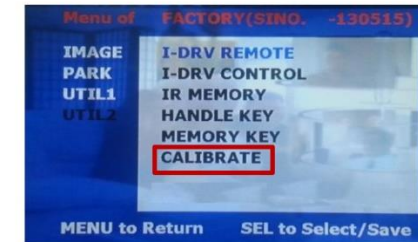


**☐ UTIL2 – IR MEMORY**

To register DVD, DTV remote control, the remote control value must be registered and can be control with I-Drive  
DVD(A/V1), DTV(A/V2)

※ To use this function, in UTIL2-I-DRV REMOTE select USER mode

DVD / DTV



**☐ UTIL2 – MEMORY KEY**

Whether to use car audio button #8 (mode change + aux change : F20)

ON / OFF

\*F56: #6 ON/OFF

**☐ UTIL2 – HANDLE KEY**

Whether to use voice button on handle for mode change



ON / OFF

**☐ UTIL2 – CALIBRATE**

Touch Calibration

YES / NO



### 3.5 DVD, DTV IR MEMORY input



- ① First of all, press ◀ button on remote controller 2 seconds long or press UP→DOWN→UP→MENU button in order to access Factory mode. Choose IR MEMORY on UTIL2.

In IR MEMORY, you can choose AV source of DTV and DVD you want to use.

- ② Picture above shows DVD remote control button value input, select menu you want to save. (To register DVD remote control button value, select IR MEMORY – DTV and follow below instructions.

Example)

- a. After select OK button on OSD menu, press intended I-Drive button
- b. Indicated part above will flicker, and press POWER on DVD remote control. (continue to next page)

#### What is IR-MEMORY Mode?

Is to allow I-Drive and touch screen to control other DVD or DTV (besides the existing,; for example : SANYO, NECVOX) by register remote control value.





### 3.5 DVD, DTV I-DRIVE input



- example) continued..
- c. The values that you registered will appear as green text in the marked area on pressing the button. And the values will be saved automatically.
- d. Register remain buttons' value in OSD menu like the above-mentioned.

- ③ After register, select "SRC" button in OSD menu. Then you can see confirmation window as shown above. At the moment, (If data is saved, DVD TYPE and DTV TYPE will be changed to "USER" automatically.)


If you see "SUCCESS" on screen, the data is saved clearly and you can control DVD via touch screen. BUT, you MUST change the option in FACTORY-UTIL2-I\_DRV REMOTE to "USER".

- ※ When touch the screen, you can control DVD, DTV using remote control UI via touch screen or I-Drive  
(6.5" monitor – Touch the middle of the screen,  
8.8", 10.2" monitor – Touch the left side of the screen)
- ※ If touch the screen in DVD(A/V1), DTV(A/V2) mode, Can see remote control UI  
If touch the screen in RGB(HDMI), A/V3 mode, Can see mode switching UI  
- If you want to see mode switching UI in DVD, DTV mode, Select "SRC" button



iDrive Use on a 6.5" Screen




Mode	Key	Operation	Function
Whole Mode	TEL	Long Press	Change mode
		Short Press	Go back to original image
	MENU	Short Press	Make a Selection
	Audio Button #8	Short Press	Change mode + Change Car AUX
Reverse mode	 (Steering wheel)	Short Press	Operate PIP function

iDrive Use on a 8.8" Screen



**I-Drive Button (8.8")**

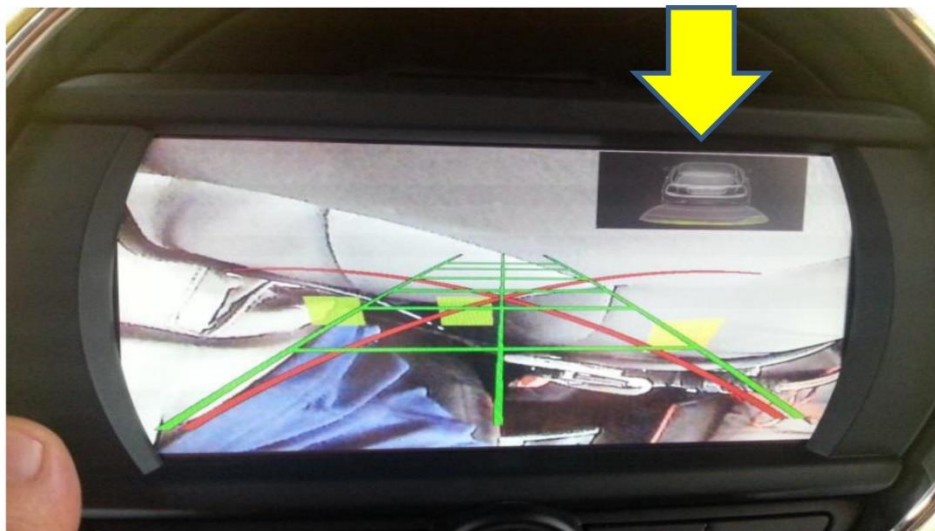
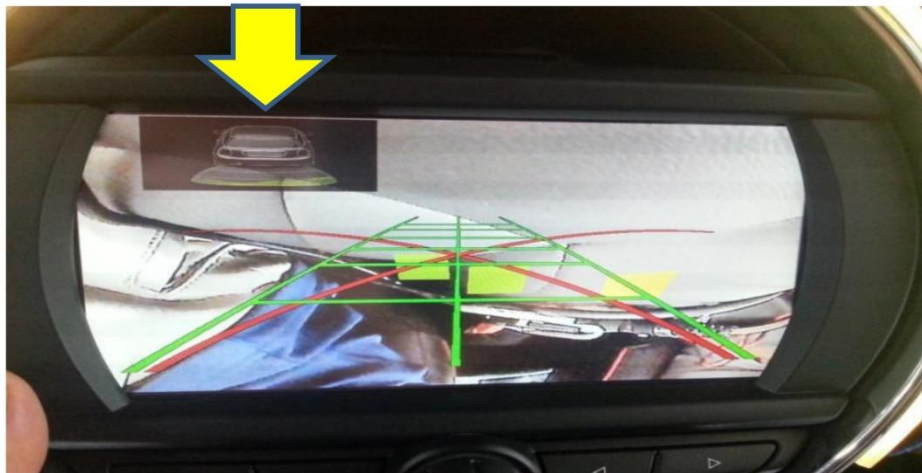
Mode	Key	Operation	Function
Whole mode	MAP	Long Press	Change mode
		Short Press	Go back to Original image
	MENU	Short Press	Select
	 Audio Button #8	Short Press	Change mode+ Change Car Aux
RGB(HDMI) AV1 AV2 AV3	▽	Long Press Downward	Operate PIP function
Reverse Mode	▽	Long Press Downward	Operate PIP function



## POP(Picture on Picture) - MINI with 6.5"

※ Only MINI with 6.5" has a POP function.

☞ Short press  Voice button in rear camera mode  
: Shift the position of POP



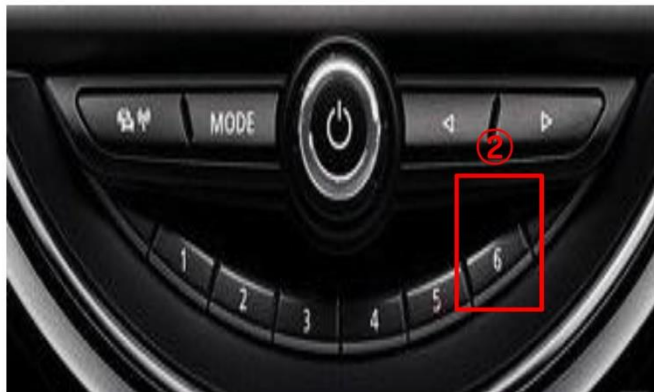
## Switching modes

☞ Long press  Voice button(Refer to Page 19)

☞ Car Audio Button (Quick Button) : Press Number 8 button - ①



☞ Car Audio Button Quick Button : Press Number 6 button (F56)-②

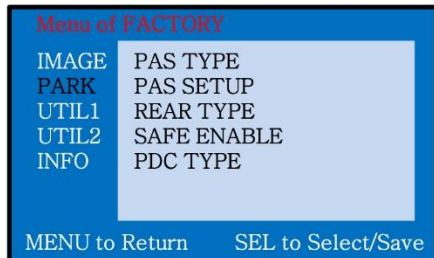


- ※ **BMW X1 is not applicable to switch modes with any Audio Buttons(Quick buttons)**
- ※ **Quick button will allow you to switch Video and Sound signals simultaneously.**

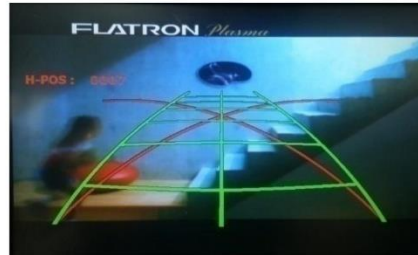


## Rear Camera

**FACTORY mode** – Press ◀ button 2 seconds long on the remote control.



※ After installing rear camera : DIP S/W #7 must be put down (ON).



### □ PARK

**PAS TYPE** : Selecting Type of parking guide line

- NOT USED : Not use Parking guide line
- PAS ON : Selecting Dynamic Parking guide line
- PAS OFF : Selecting fixed Parking guide line

**PAS SETUP** : Adjusting the position of the parking guide line (available in PARK SETUP-> V-POSITION, H-POSITION)

**REAR TYPE** : Choose rear camera recognition

- \* LAMP - Detecting the rear view camera via rear lamp (Installer must connect "Rear-C" cable of the power cable to the rear lamp of the car.)
- \* CAN - Detecting the rear view camera by CAN signal (Installer must connect "CAN" cable of the power cable to the "CAN" cable of the car.)

**SAFE ENABLE** : If your car is connected with CAN cable and it is in "ON" state, you can NOT watch DVD or A/V except original image or navigation while driving. At that time the screen use only main and navigation(default : OFF)

**PDC TYPE** : When PDC mode, Selecting screen ratio

- \* OEM CAM : The car has original camera and install external camera
- \* EXT. CAM : The car doesn't have original camera and install external camera
- \* 15Y HARMAN : When original PDC is located in middle of the screen

a. If you want to get to the FACTORY mode, set the gear as rear state and press "LEFT" button 2 seconds long on the remote control or the keypad. (as shown left top)



## Rear Camera / 6.5"

### Rear display setting



Press shortly on steering wheel, to select rear camera screen and POP screen

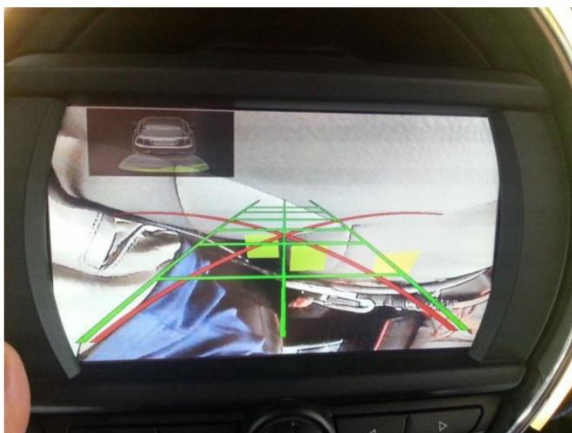


< Rear camera full screen >



< PIP screen >

## Rear Camera / MINI with 6.5"

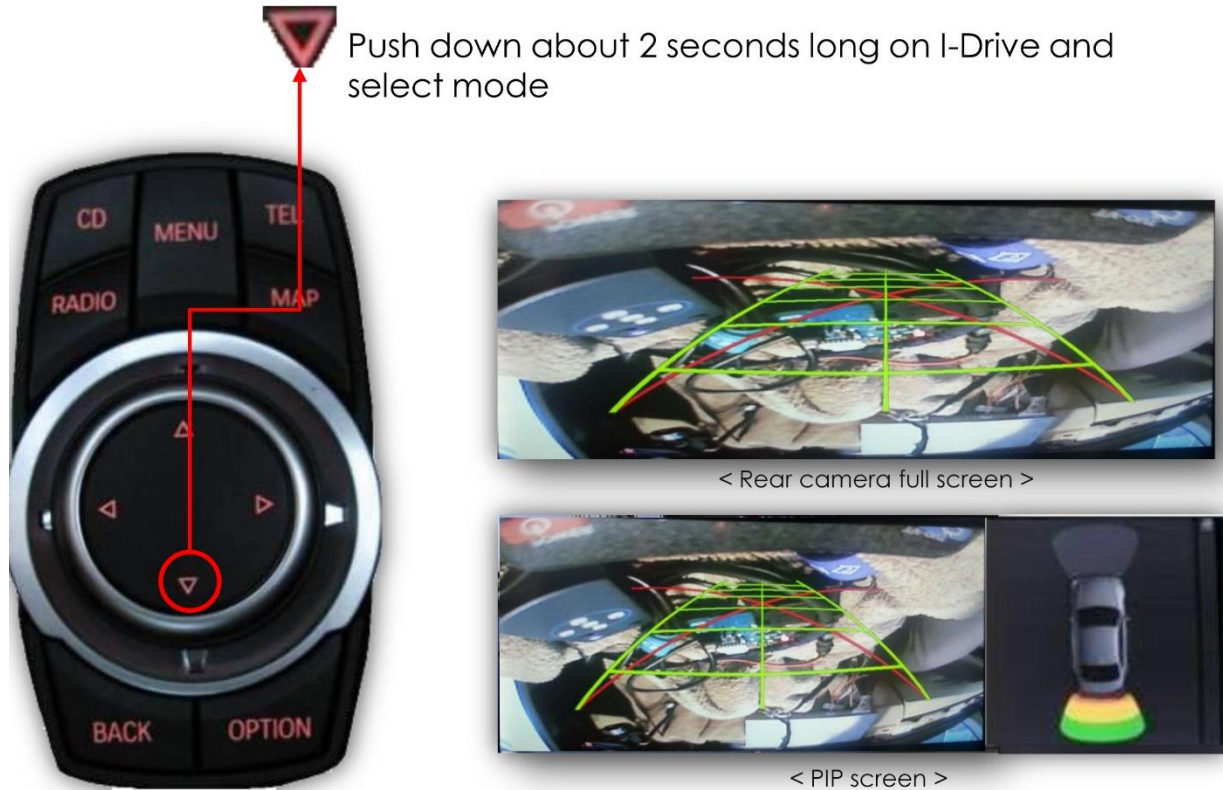


Short press  Voice button :  
- Shift the position of POP

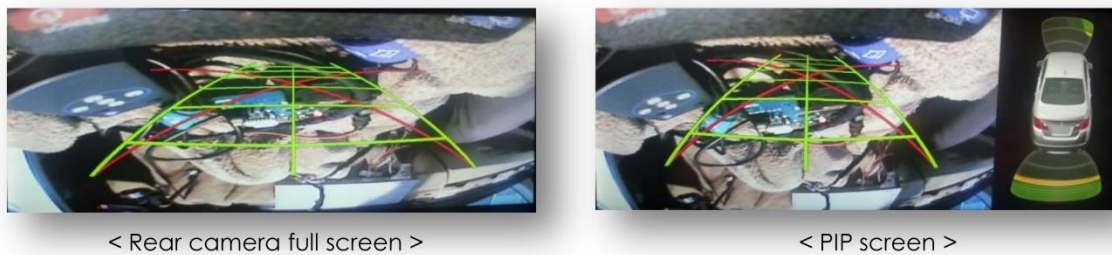


## Rear Camera / 8.8"

### Rear display setting



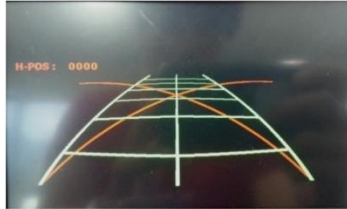
※ For 3D PDC, set DIP S/W 6 ON



## Rear Parking Guidelines

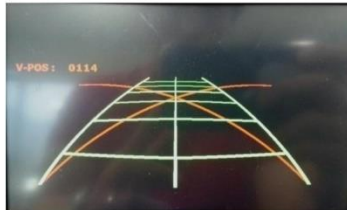
Go to Factory Menu, choose PAS SETUP, by using OK button change  
H-POS → V-POS

### □ H-POS



In H-POSITION, use ◀, ▶ on remote control, to adjust parking guideline left and right.

### □ V-POS



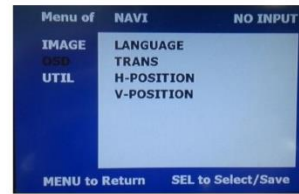
In V-POSITION use ▲, ▼ on remote control, to adjust parking guideline up and down.

## OSD (On Screen Display) / Analog RGB Mode



### □ IMAGE

- \* BRIGHTNESS
- \* CONTRAST
- \* SHARPNESS



### □ OSD

- \*LANGUAGE : Set OSD language (only support English and Chinese)
- \* TRANS : Adjust OSD transparency
- \*H-POSITION : Move OSD horizontally
- \* V-POSITION : Move OSD vertically



### □ UTIL

- \* FACTORY RESET  
: Factory reset only for OSD function  
(unable reset video position)





## OSD (On Screen Display) / Video Mode



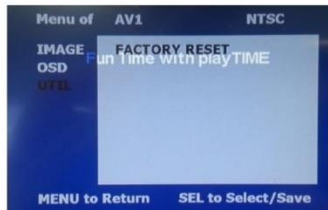
### □ IMAGE

- \* BRIGHTNESS
- \* CONTRAST
- \* SATURATION
- \* HUE
- \* SHARPNESS



### □ OSD

- \* LANGUAGE : Set OSD language (only support English and Chinese)
- \* TRANS : Adjust OSD transparency
- \* H\_POSITION : Move OSD horizontally
- \* V\_POSITION : Move OSD vertically



### □ UTIL

- \* FACTORY RESET  
: Factory reset only for OSD function (unable reset video position)

## VEHICLE APPLICATIONS:

Vehicles with CIC-High (NBT) 6-Pin LVDS Connector and 6.6", 8.8" and 10.2" monitors

### BMW

2012 – 2015	1 Series (F20)
2012 – 2016	3 Series (F30/F31)
2014 – 2016	4 Series (F33/F36)
2013 – 2016	5 Series (F10/F11)
2012 – 2015	5 Series GT (F07)
2013 – 2016	6 Series (F12/F13)
2012 – 2016	7 Series (F01/F02)
2016	X1 (F48)
2014 - 2016	X3 (F25)

### BMW

2014 – 2016	X4 (F26)
2012 – 2016	X5 (E70)
2013 – 2016	X6 (F16)
2014 – 2016	i3
2015 – 2016	i8

### MINI

2014 - 2016	Cooper (F56)
-------------	--------------

