

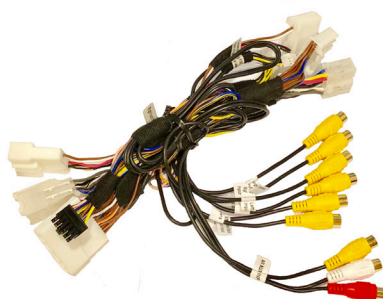
PRODUCT FEATURES:

- Adds a reverse camera input, 6 video plus 1 audio/video inputs.
- Uses the steering wheel controls buttons to toggle between the sources.
- Turn signals automatically triggers the corresponding side camera.
- Turn signal camera trigger can be turned on or off by using the SWC button.

PARTS INCLUDED:



RFM-TUN Module



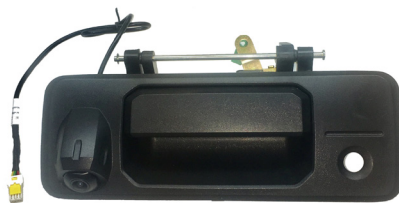
RFM-TUN Harness



CSV-TUN Tundra Side Mirror Camera

OPTIONAL ADD-ON CAMERAS:

Optional add on cameras are available to complete the multi-view capability of the RFM-TUN. Cameras available and ***sold separately*** include: (More cameras can be found at www.cruxinterfacing.com)



CTY-01T Tailgate Handle Camera



CFF-01 Bullet Type Front Camera
(Recommended)



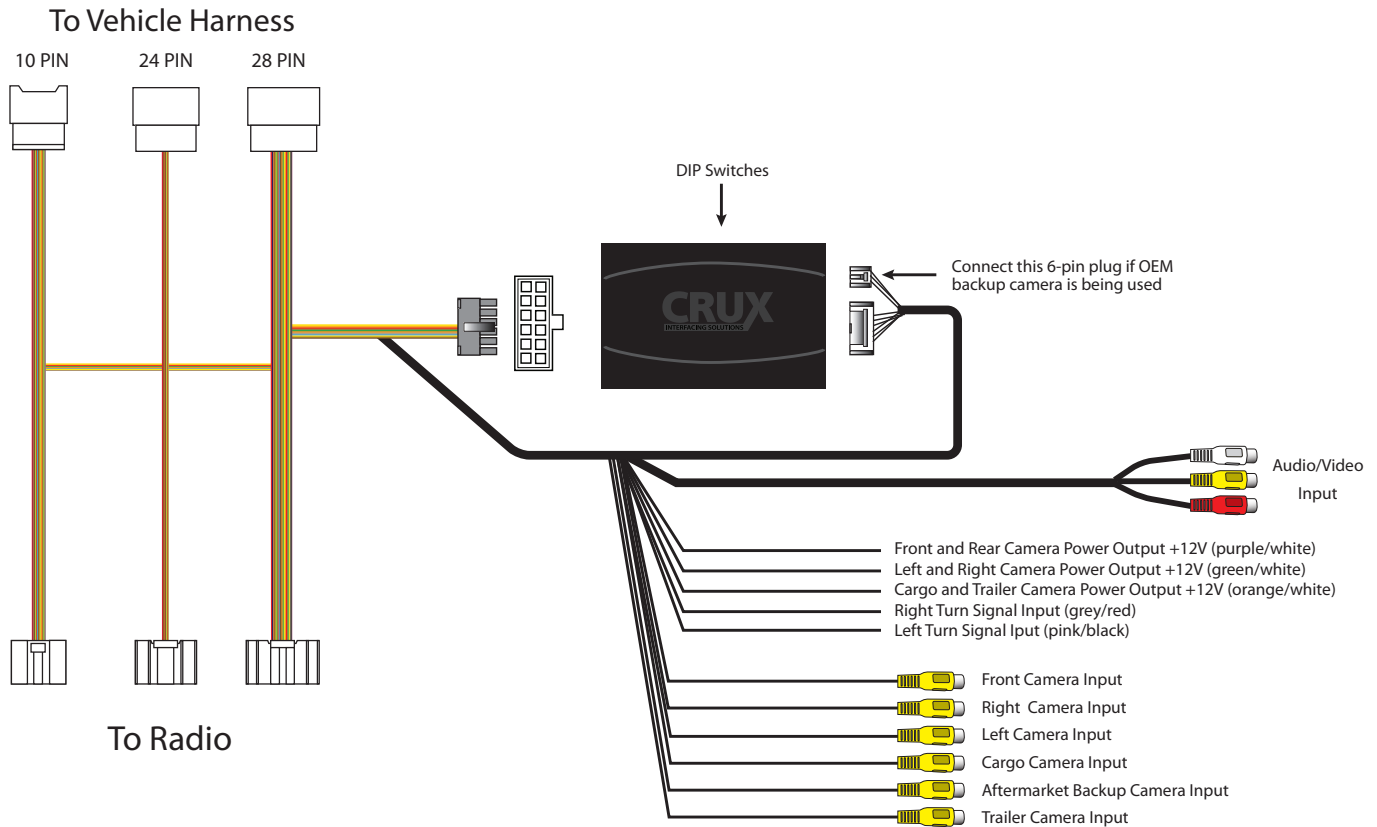
CFF-02 Square Body Front Camera



CFF-03 Grille Mount Front Camera



INSTALLATION DIAGRAM:



DIP SWITCH SETTINGS:

DIP#	ON	OFF
1	No Function – Leave OFF	
2	Front Camera ON	Front Camera OFF
3	Left Camera ON	Left Camera OFF
4	Right Camera ON	Right Camera OFF
5	Cargo Camera ON	Cargo Camera OFF
6	Trailer Camera ON	Trailer Camera OFF
7	AUX A/V ON	AUX A/V OFF
8	Set to OFF	

FORCED VIEW CAMERA SEQUENCE:

Using OEM backup Camera

FRONT → CARGO → TRAILER → AV MODE

Using Aftermarket backup Camera

FRONT → BACKUP → CARGO → TRAILER → AV MODE



OPERATION:

Side Mirror Mounted Camera Installation:



1. Remove the side mirrors by first removing the corner sail panels. Unplug the mirror harness.



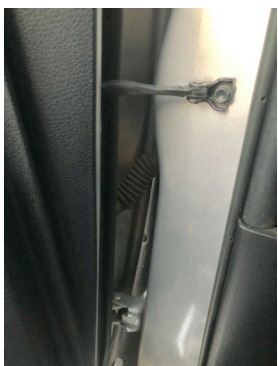
2. Remove the OEM side mirror camera cover and run the CSV-TUN camera cable through the harness hole.



3. Remove the screws on the interior door handle and door pull.



4. Remove the window controls and unhook the door panel by pulling it upward.



5. Fish the camera cable through the wiring boot for a clean look. Run the cable to the module and plug them in.



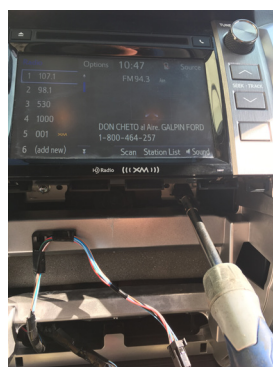
6. Tuck in the camera cable inside the cavity and snap in the CSV-TUN side mirror cover with camera.



RFM-TUN module installation:



1. Carefully pull out the bottom trim with cigarette lighter sockets then the AC control panel.



2. Remove the 2 screws holding the radio and unplug the connectors. Set the radio to the side.



3. Install the front and back up cameras (if applicable), and run the camera wires towards the radio.



4. Make the video RCA connections at the RFM-TUN harness. See diagram on page 2 for the camera power connections.

5. To enable the Left and Right side camera view feature:

- Turn on Left turn signal then press and hold the Hang Up button on SWC for 3 seconds.
- Turn on the Right Turn signal then press and hold the Hang Up button on SWC for 3 seconds.

To disable either side camera, repeat the same procedure above.



OPERATION:



1. Press and hold the HANG UP button for 3 seconds to turn on forced camera view mode. Each press of the button thereafter toggles which ever cameras are turned on using the DIP switches. It will also toggle to AV mode. **Forced view of the backup camera is only available if using an aftermarket backup camera. Side cameras cannot be forced viewed.** While in reverse gear, press and hold the HANG UP button to toggle between reverse, cargo and trailer cameras.



2. The left and right turn signal triggers the respective side camera. See diagram on page 2 for wire connection information.



3. The front camera (if installed) will automatically show on the screen for 10 seconds when the gear is put to Drive from Reverse.



4. Go to AUX IN mode on the radio to hear audio when using the AV Input.



CSV-TUN side mirror mounted camera



CFF-01 installed on grill. (CFF-01 sold separately)

VEHICLE APPLICATIONS:

TOYOTA

2016 – 2018 Tundra (3rd Generation)

