

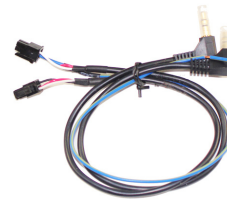
PRODUCT FEATURES:

- Retains factory-installed amplified systems (non fiber optic amps only)
- Retains Steering Wheel Controls via built-in, pre-programmed interface
- Reverse gear, Illumination and Speed signal outputs
- Provides 12V Accessory Power Output (2A MAX)
- Includes BOTH Quadlock and ISO harnesses

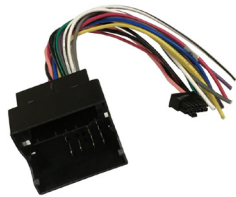
PARTS INCLUDED:



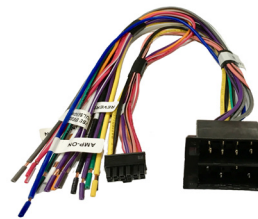
SWRBM-57 MODULE



SWC Cables

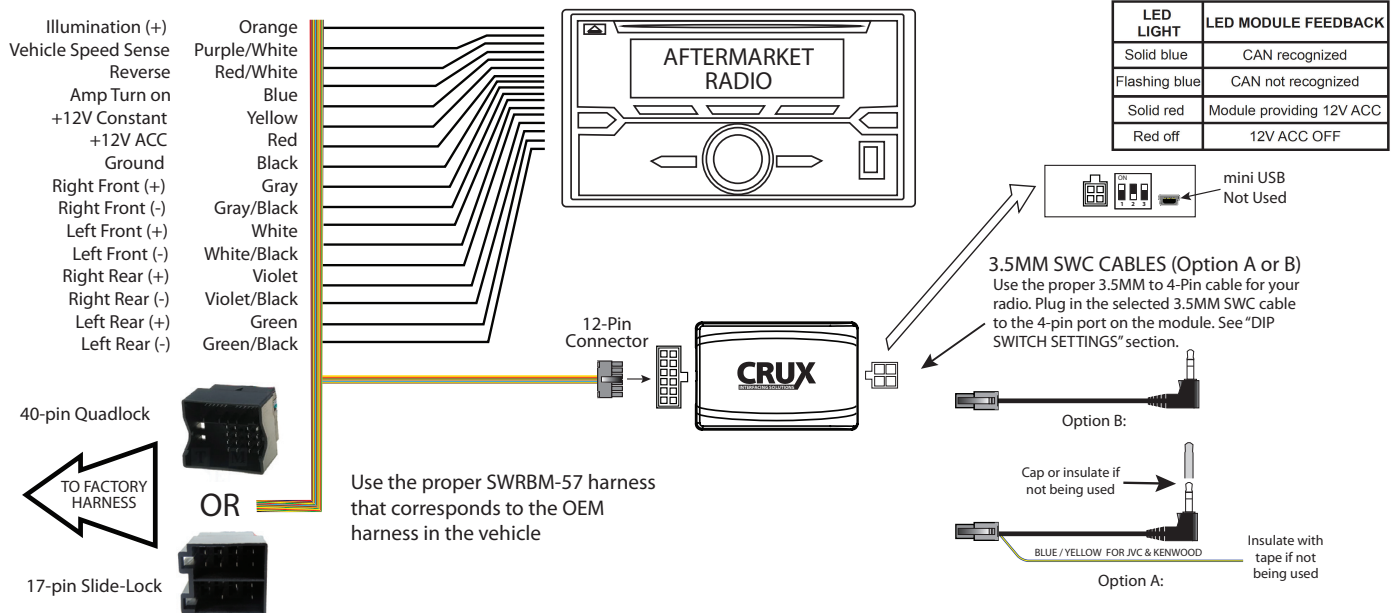


40-Pin Quadlock Harness



ISO Harness

INSTALLATION DIAGRAM:



DIP SWITCH SETTINGS:

AFTERMARKET RADIO DIP SWITCH SETTINGS:

RADIO BRAND:	DIP#:	1	2	3
Atoto, Dual, Fahrenheit, Jensen		OFF	ON	ON
Pioneer, Power Acoustik, Soundstream		OFF	ON	ON
Blaupunkt, Most off-brand Radio		OFF	ON	ON
Alpine		OFF	OFF	OFF
Clarion		ON	ON	OFF
Kenwood		ON	ON	ON
JVC		ON	OFF	ON
Boss, Old Sony		ON	OFF	OFF
New Sony		OFF	ON	OFF

SWC MODULE
DIP SWITCH



NOTE: For Atoto, Blaupunkt, Dual, Fahrenheit, Power Acoustik, Soundstream, and most off-brand radios, check the aftermarket radio's manual to see if the SWC buttons need to be programmed.

3.5MM SWC CABLE

Plug in the 3.5MM to 4-Pin SWC cable to the SWC module or use the Blue/White wire for JVC and Kenwood.

For aftermarket radios that have wires for SWC connections, cut off the 3.5mm plug on the Crux SWC Cable (option B) and connect the SWC wires as follows:

Note that there are some radios that only have SWC1 and SWC2, in this case "shield" does not need to be connected.



VEHICLE APPLICATIONS:

TYPE A: 40 Pin Quadlock Connector

BMW

- 2007 – 2013 1 Series (E81/82/87/88)
- 2006 3 Series (E90/91) Sedan/Wagon
- 2007 – 2012 3 Series (E90/91/92/93)

MERCEDES BENZ

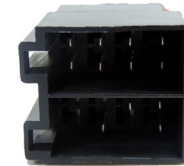
- 2004 – 2010 A Class (W169) with Quadlock
- 2004 – 2010 B Class (W245) with Quadlock
- 2007 – 2014 C Class (W204)
- 2005 – 2006 C Class (W203)
- 2005 – 2009 CLK Class (W209)
- 2004 – 2010 CLS Class (W219)
- 2010 – 2017 E Coupe (W207)
- 2009 – 2012 E Class (W212)
- 2005 – 2011 M Class (W164)
- 2016 Metris (W447)
- 2006 – 2011 R Class (W251)
- 2004 – 2008 SLK (R171) Non Fiber-Optic
- 2009 – 2011 SLK (R171)
- 2014 – 2018 Sprinter (W906)*
- 2019 – 2020 Sprinter(W907/W910)



TYPE B: ISO Connectors

MERCEDES BENZ

- 2004 – 2010 A Class (W169) with Audio5
- 2004 – 2010 B Class (W245) with Audio5
- 2000 – 2004 C Class (W203)
- 1999 – 2002 CLK Class (W208)
- 2003 – 2004 CLK (W209)
- 1999 – 2000 E Class (W210)
- 2001 – 2002 E Class (W211)
- 2001 – 2004 SL Class (R230)



MINI

- 2013 Cooper S

PORSCHE**

- 2004 – 2011 911
- 2004 – 2016 Boxster
- 2004 – 2012 Cayman
- 2010 – 2016 Panamera

*To retain the factory Sprinter camera after replacing the radio, use Crux part# FAK-RCAM (sold separately)

** Does not retain fiber optic amplifier.

