

PRODUCT FEATURES:

- Front View Camera + 2 AV inputs
- Automatically switches screen to Rear-view when Reverse gear is engaged and to Front camera view when gear is engaged to drive
- Manual activation of the front camera using the steering wheel control button
- Plug & Play Installation
- Video in Motion function

For vehicles with factory installed backup camera ONLY.

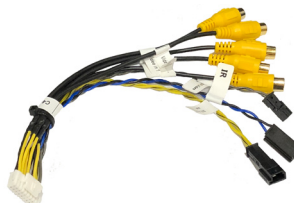
PARTS INCLUDED:



VRFCH-75U Module



VRFCH-75U Harness

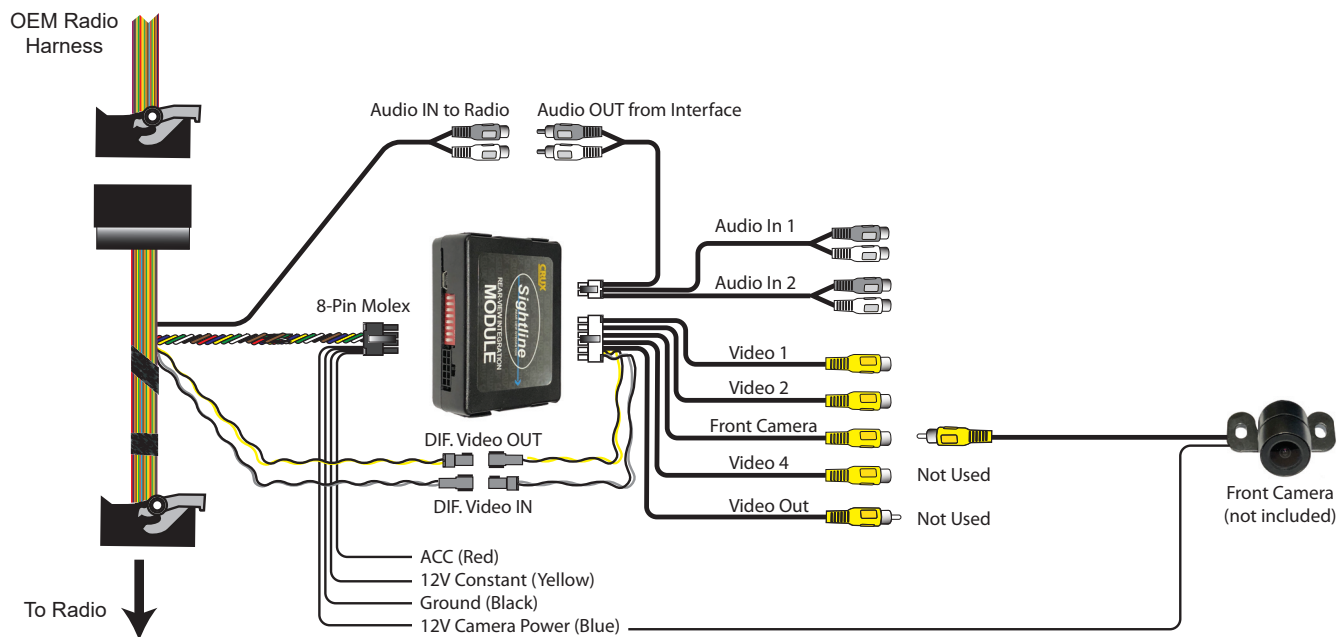


Video Harness



Audio Harness

INSTALLATION DIAGRAM:



DIP SWITCH SETTINGS:

SETTING	DIP 1	DIP2	DIP3	DIP4	DIP5	DIP6	DIP7	DIP8
ON	AV 1 Enabled	AV 2 Enabled	Front Camera Enabled	Set to OFF	Set to OFF	Manual Transmission	Brightness Set to ON*	Set to ON
OFF	AV 1 Disabled	AV 2 Disabled	Front Camera Disabled	Set to OFF	Set to OFF	Automatic Transmission		

*We recommend setting DIP #7 to ON, however, if the video does not display correctly, set DIP #7 to OFF instead.

INSTALLATION INSTRUCTIONS:

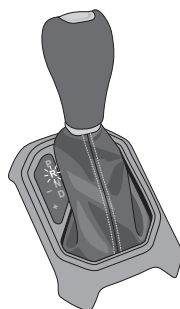
The interface module is installed behind the headunit.

INSTALLING THE INTERFACE MODULE

1. Carefully remove the radio to gain access to the radio harness.
2. Unplug the radio connector and plug it into the female connector of the VRFCH-75U T-harness.
3. Plug in the T-harness (10-pin Molex connector), Video and Audio harnesses to the VRFCH-75U module.
4. Install the front camera (not included) following the manufacturer's instructions.
5. After installation of the front camera, plug in the camera's video RCA to the female RCA (Front Camera) and connect the camera power to the BLUE wire (Front Camera Power 12V) of the VRFCH-75U harness.
6. Plug in any other Audio/Video devices to be installed to the AV inputs of the VRFCH-75U.
7. Connect the AUDIO IN and AUDIO OUT on the VRFCH-75U harness. See diagram on page 1.
8. Connect the DIF. Video IN and DIF. Video OUT connectors. See diagram on page 1.
9. Set the DIP switches on the VRFCH-75U module following the chart above.
10. Connect the ACC, 12V Constant and Ground wires of the VRFCH-75U to the vehicle power. See diagram on page 1.

OPERATION:

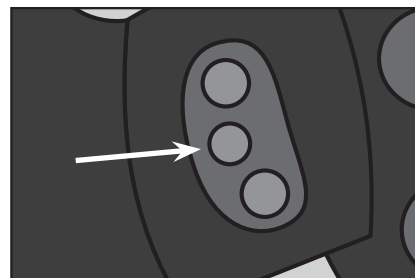
1. Putting the gear in REVERSE automatically shows the rear camera onto the display.



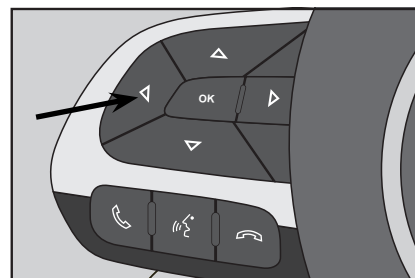
2. If a front camera is installed, the VRFCH-75U automatically shows the front camera for 10 seconds or until the vehicle reaches a speed of 10 MPH after a reverse process.



3. To enter or exit the AV mode, please and hold the middle button on the right rear side steering wheel controls for 3 seconds.
4. A quick press of the middle button on the right side steering wheel controls toggles between the AV sources.



3. To enter forced camera view mode, please and hold the ◀ button on the left side steering wheel controls for 3 seconds.
4. A quick press of the ◀ button on the left side steering wheel controls toggles between Front and Rear view cameras.



VEHICLE APPLICATIONS:

JEEP

2017 - 2018 Compass
2015 - 2018 Renegade

Radio Compatibility:

Uconnect

NOTE:

Vehicle must have a factory installed backup camera.



2017 Compass



2017 Renegade

