

**PRODUCT FEATURES:**

Use on trucks, buses and other vehicles with 24V systems that require a blind spot elimination camera solution.

**PRODUCT FEATURES:**

**CAMERA**

- Dual wide view camera with 150° and 90° viewing angles.
- AHD chipset for super clear image quality.

**MONITOR**

- Split view LCD monitor.
- 2 camera inputs.
- Separate trigger control wire for each camera with full screen view.
- Water resistant aviation connectors.
- Rated at 24 Volts.
- 64 Gb micro SD card included.

**PARTS INCLUDED:**



Dual Lens Wide Angle  
Camera



12.3" Split View Monitor



Power/Video  
Harness



64GB  
Micro SD Card



Camera Extension Cable  
(2 pcs)



Overhead Mount



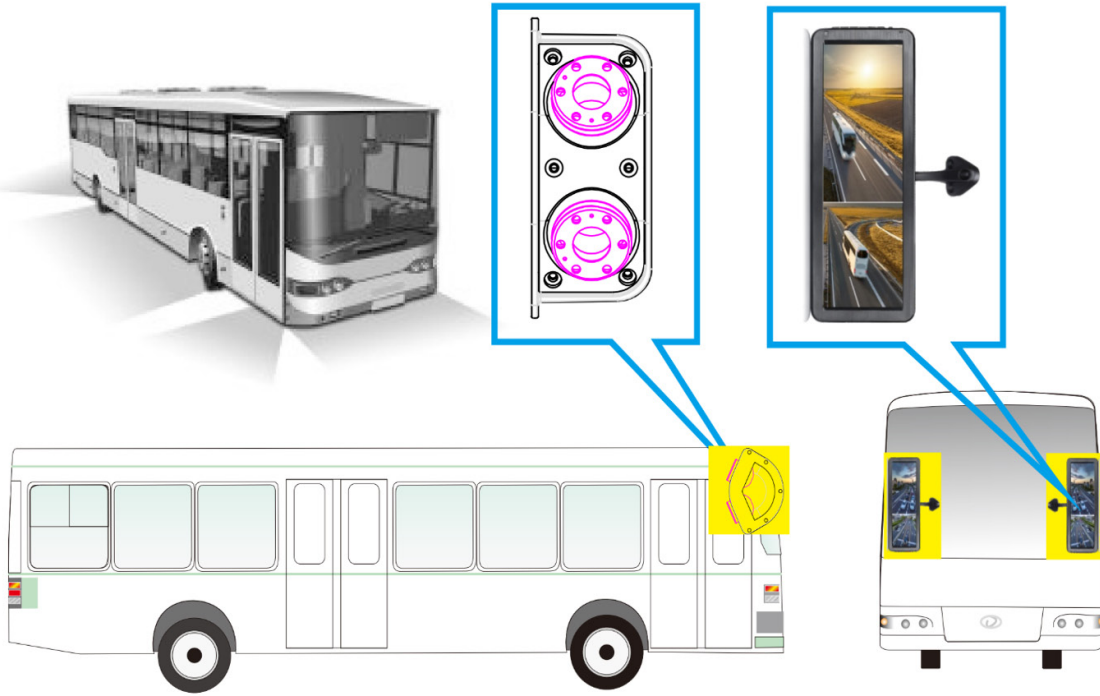
Angle Mount



Remote Control



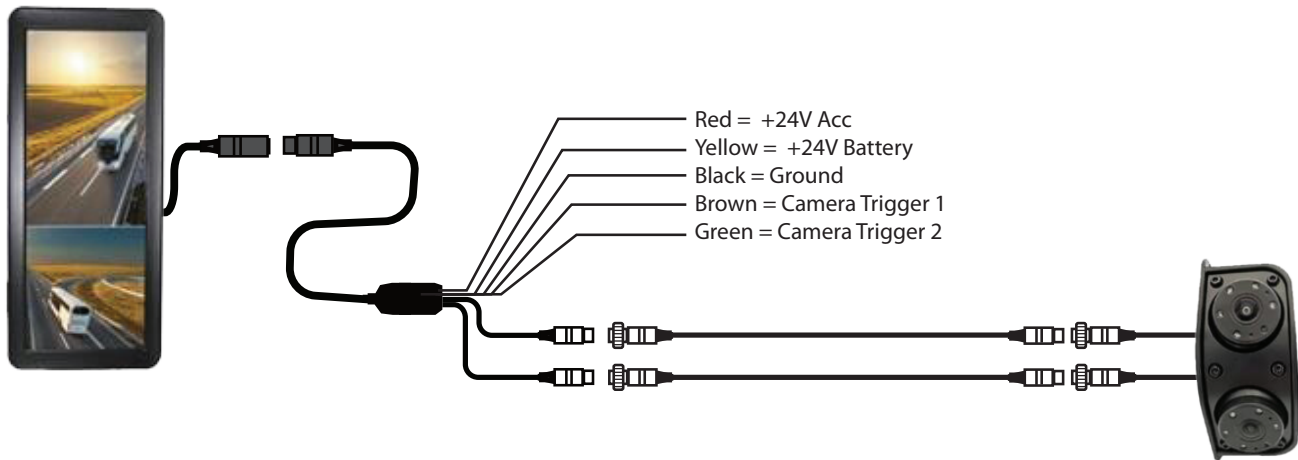
**MOUNTING LOCATIONS:**



Inside the bus:



**CONNECTION DIAGRAM:**

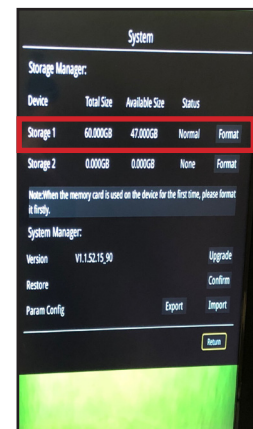
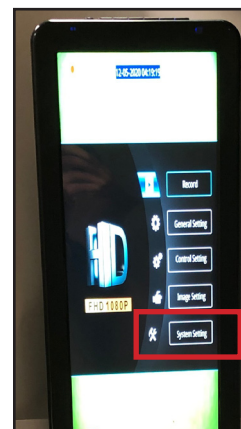


**INITIAL SETTINGS:**

Once the monitor and camera has been installed, it is recommended that the micro SD card be formatted. Use the remote control provided or the monitor buttons to change the settings.



Press the "OK" button on the remote control or the "M" button on the monitor to enter the main menu. Use the UP, DOWN, LEFT and RIGHT arrows to navigate through selections. Scroll to the "System Setting" then "Storage Manager". Select "Storage 1" and click "Format".



After the micro SD card has been formatted, navigate through the menu to change the desired settings.

<u>MENU</u>	<u>DESCRIPTION</u>
<b>Record</b>	Search for video Playback / Lock & Unlock video
<b>General Setting</b>	Set date & time / time format / video format / language / resolution
<b>Control Setting</b>	Video output / border color / audio recording
<b>Image Setting</b>	Change image color, screen margins and display mode / Mirror config
<b>System Setting</b>	Storage manager / System manager

**Mirror Config:**

- Mirror: Show mirror image of cameras
- Flip: Flip image horizontally (left to right)
- 90°: Flip image 90 degrees
- 210°: Flip image 210 degrees



**ADJUSTING THE OVERHEAD MOUNT:**

To adjust the angle of the monitor angle when using the overhead mount, slightly loosen the 4 screws under the monitor mount first.



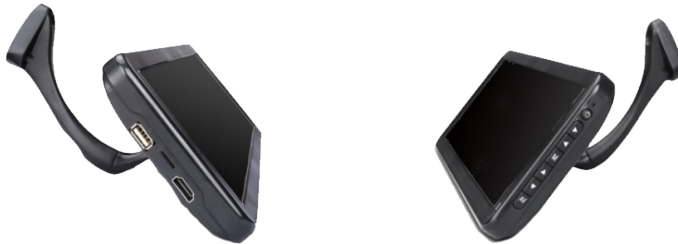
**ADJUSTING THE CAMERA LENS:**

To adjust the angle of the camera lens, loosen the 6 allen head screws using the allen wrench provided in the kit. Tighten the screws once the correct angle is achieved.



**SPECIFICATIONS:**

<b>MONITOR</b>	
Screen Size	12.3" (8:3)
Resolution	1920 (H) x 720 (V) AHD
Screen Back Light	LED
Brightness	850 cd/m <sup>2</sup>
Contrast	800:1
System	NTSC
Voltage	24 Volts
TF Card	64 GB (included) / 256GB max



<b>CAMERA</b>	
Image Device	AHD 720P
Effective Pixels	1280 (H) x 720 (V)
Minimum Illumination	0.0001 LUX/F12
Resolution	1200 TVL
System	NTSC
Voltage	24 Volts
Viewing Angle	150° / 90°
Operating Temperature	-20°C to 70°C

