



**VIMVW-91**



**AUDI:**

- 2003 - Up A3
- 2003 - Up A4
- 2003 - Up TT

**VOLKSWAGEN:**

- 2004 - Up Touareg
- 2004 - Up Golf
- 2006 - Up Passat

**VIDEO IN-MOTION ACTIVATION FOR VOLKSWAGEN MFD2/ RNS2 & AUDI w/RNS-E RADIOS**

We recommend reading this installation guide first before starting any work. Following these instructions from "Start" to "Finish" will ensure a smooth and hassle free installation. We offer telephone support M-F 9:00 AM - 5:00PM PDT at 1 (855) 822-1348. We are here to help.

**PARTS INCLUDED:**

- (1) VW-91 Interface
- (1) VW-91 Harness
- (1) Instruction

**PRECAUTIONS:**

- Remove the negative side of the battery to avoid any short circuits during the installation.
- Do not install the interface near any major components or near the HVAC system. This may cause damage or overheating to the vehicle.
- **Do not disconnect the airbag connection behind the radio panel.**

**PRELIMINARY:**

Please read the entire manual before installing this interface.  
**Vehicle must be equipped with factory DVD changer.**  
 This interface does not activate DVD reader.

**SAFETY WARNING:**  
**THIS INTERFACE IS DESIGNED TO ACTIVATE VIDEO IN-MOTION TO ALLOW THE PASSENGER ACCESS TO THE ADDRESS INPUT WHILE THE VEHICLE IS IN-MOTION. THIS INTERFACE MAY CAUSE AN ERROR WHEN SERVICED AT THE OEM DEALER. BE AWARE THAT MOST DEALERS WILL ATTEMPT TO VOID THE MANUFACTURERS WARRANTY WHEN INSTALLING ANY AFTER-MARKET EQUIPMENT. IMPROPER USE OF THIS INTERFACE BY THE DRIVER MAY RESULT IN CITATION. DRIVER MUST KEEP FULL ATTENTION ON THE ROAD AND RESPONSIBILITY ON THE SAFETY OF HIS PASSENGERS.**

**INSTALLING THE INTERFACE:**

1. Remove the factory radio to gain access to the factory connectors.
2. Make the T-Harness connections behind the **factory radio**.  
(if the connectors do not match please contact tech support)
3. Test and make sure the Reverse gear triggers the interface and also test the video in-motion while the car is rolling.  
(Navigation address input should be active while rolling)
4. Make all other connections before re-installing the factory radio.

**NON-PERMANENT VIDEO IN-MOTION:**

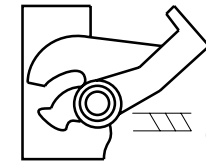
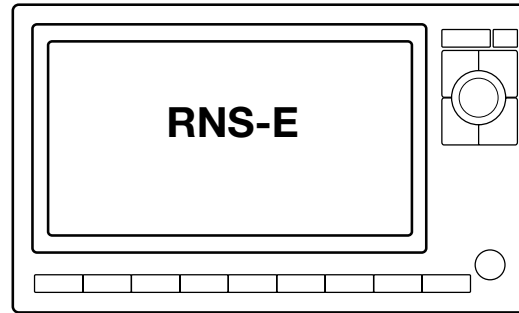
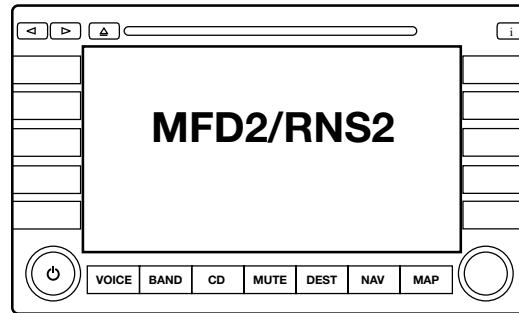
If the customer wants the option to deactivate the video in-motion. The installer can use the GREEN wire instead of the dip switch setting to activate and deactivate the video in-motion.

This way the user can have access to the wire without having to get behind the radio if wanting to deactivate.

**Important Note:**  
 This interface only supports the following radio types:

- MFD-2**
- RNS2**
- MFD2**

**INSTALLATION OVERVIEW**

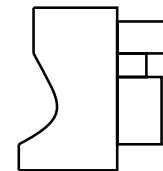


**16-PIN**  
(male plug)

GREEN/ VDO UNLOCK  
 WHITE/ 12V OUTPUT



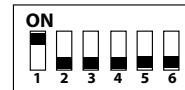
**8-PIN**  
(male plug)



**16-PIN**  
(female plug)

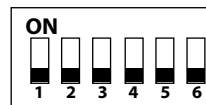
**TO FACTORY HARNESS**

**VOLKSWAGEN RNS-2 & MFD-2 RADIOS:**



- 1. ON
- 2. OFF
- 3. OFF
- 4. OFF
- 5. OFF
- 6. OFF

**AUDI RNS-E RADIOS:**



- 1. OFF
- 2. OFF
- 3. OFF
- 4. OFF
- 5. OFF
- 6. OFF

**ACTIVATION FOR AUDI RADIOS:**

To activate the video in-motion feature on the Audi radios you must Press and Hold Seek Up on the factory radio controls. Repeat to deactivate.

The button will flash 3 times to confirm activation.

**Note: Factory navigation will not be active when VIM is active.**

**TROUBLE SHOOTING**

1. No video display while driving.  
 - Make sure the dip switches are in the proper location.