



PRODUCT FEATURES:

- Adds Bluetooth Handsfree Calling to the OEM radio.
- Adds 4 channel Bluetooth Music streaming.
- Automatically pauses BT Streaming when a call is received, and resumes when the call is ended.
- Allows user to answer, end calls, track up and track down music using the steering wheel controls.
- DSP and Echo-Cancellation allows for clear conversations on both sides of the phone call.
- Allows any previously paired mobile phone to automatically re-connect to the Bluetooth interface.
- Hear Navigation App voice prompts from the factory speakers while in Bluetooth mode.

NOTES:

1. Vehicle **MUST** have steering wheel controls.
2. Vehicle **MUST** have a factory Aux Input.



PARTS INCLUDED:



BTCCR-35M Module



BTCCR-35M Vehicle Harness

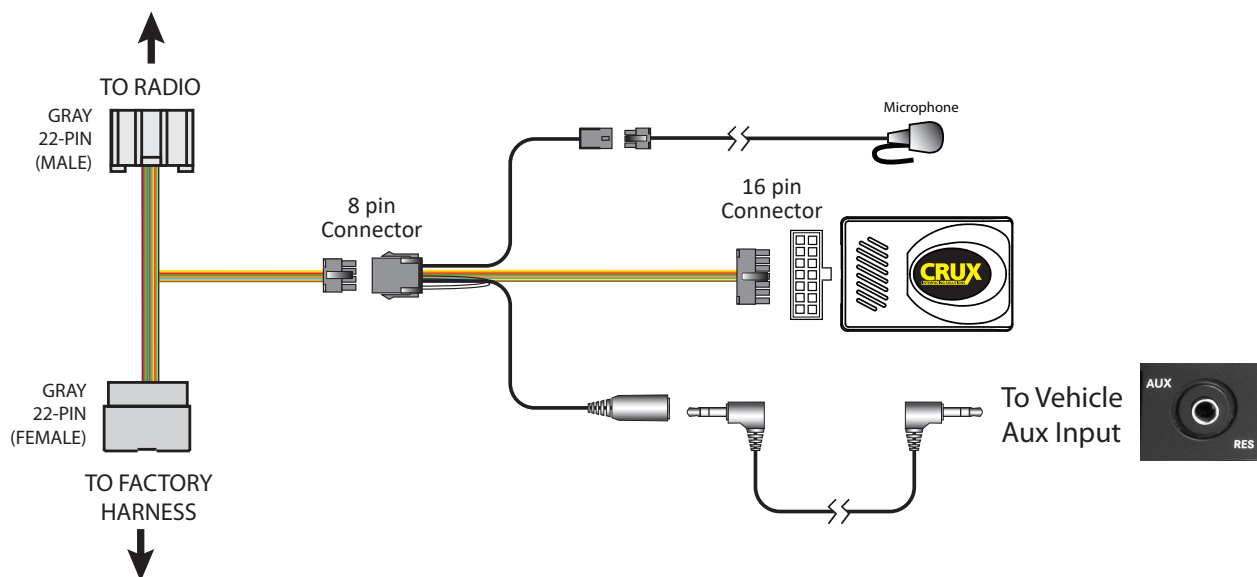


Microphone



BT Harness

INSTALLATION DIAGRAM:





INSTALLATION INSTRUCTIONS:



1. Remove the radio to gain access to the connectors.



2. Unplug the 22 pin factory connector from the radio.



3. Plug the BTCCR-35M T-harness between the radio and the factory connectors.



4. Plug the 3.5mm auxiliary audio cable of the BTCCR-35M to the factory AUX port.



5. Plug the 3 pin microphone connector to the BTCCR-35M t-harness.



6. Run the microphone cable along the A pillar and clip the microphone on the A pillar trim.

DIP SWITCH SETTINGS:

Set DIP #1 to ON and 2 to 6 OFF.



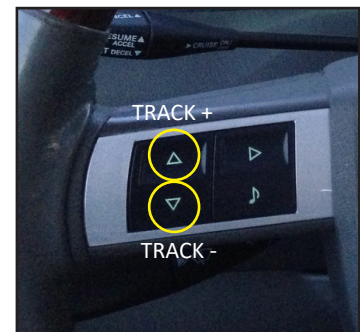


OPERATION:

1. Turn on the radio and go to the Bluetooth settings on the phone.
2. Pair the phone to blueLogic.
3. Change the source on the radio to AUX mode.
4. Play music on your phone and audio will be heard on the car speakers.
5. When there is an incoming call, go to AUX mode on the radio if you are in any other mode. Use the steering wheel control buttons to pick up and end the call. See steering wheel control button functions below.

CONTROL BUTTONS ON STEERING WHEEL:

BUTTON	PRESS DURATION	FUNCTION
TRACK +	Short Press (< 1 sec)	Next Track
TRACK -	Short Press (<1 sec)	Previous Track
TRACK +	Press & Hold (<1.5 sec)	Play/Pause
TRACK +	Press & Hold (<3 sec)	Voice Command (Siri / Google)
TRACK +	Press & Hold (<3 sec)	Answer / End Active Call
TRACK -	Press & Hold (<3 sec)	Reject Call / End Active Call



VEHICLE APPLICATIONS:

CHRYSLER

2011-2014	200
2008-2010	300
2008-2009	Aspen
2004-2008	Pacifica
2008-2012	Sebring
2008-2016	Town & Country

JEEP

2008-2010	Commander
2008-2016	Compass
2008-2013	Grand Cherokee
2008-2012	Liberty
2008-2021	Patriot
2007-2017	Wrangler

DODGE

2008-2013	Avenger
2008-2012	Caliber
2007-2021	Caravan
2008-2014	Challenger
2007-2010	Charger
2007-2012	Dakota
2007-2013	Durango
2007-2010	Journey
2007-2008	Magnum
2007-2012	Nitro
2009-2012	Ram

VOLKSWAGEN

2009-2014	Routan
-----------	--------

