

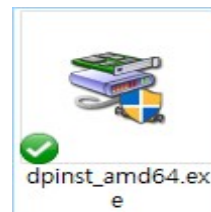
# Onetake Firmware Update Manual

## 1. Driver Install

1) Windows 32bit -> Install "dpinst\_x86.exe"



Windows 64bit -> Install "dpinst\_amd64.exe"

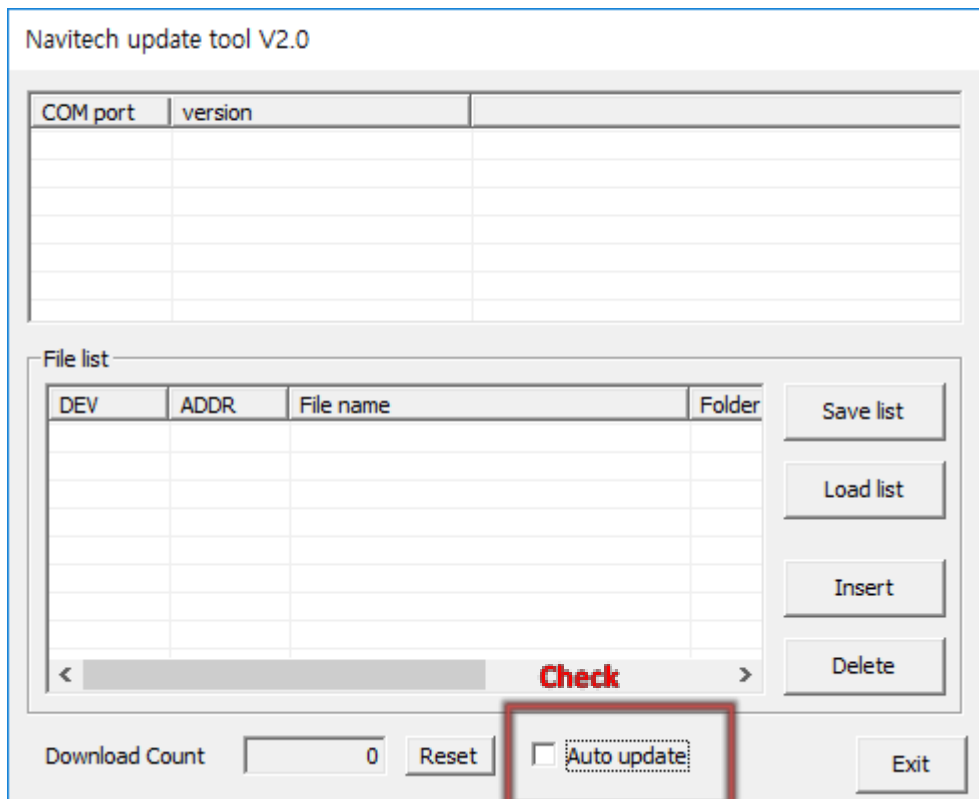


## 2. Update Procedure

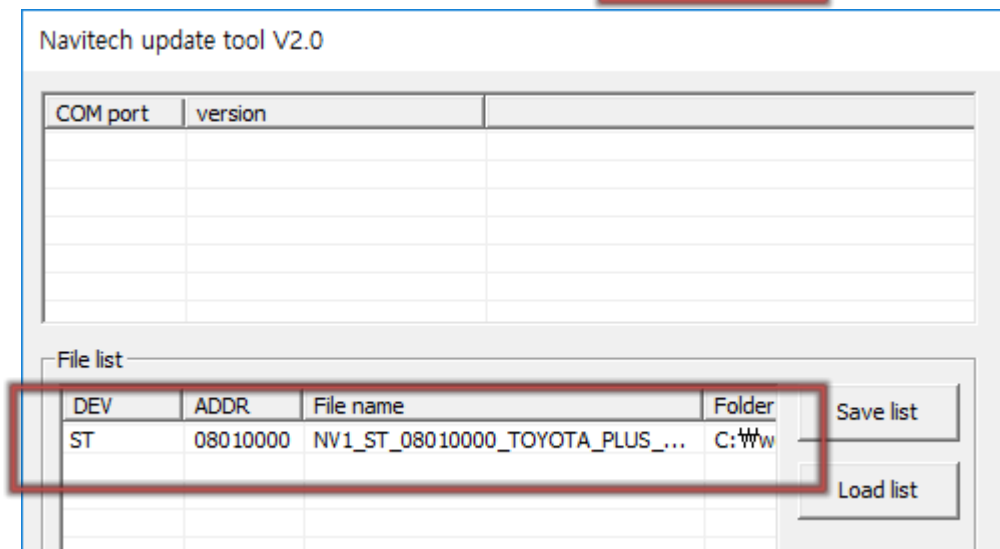
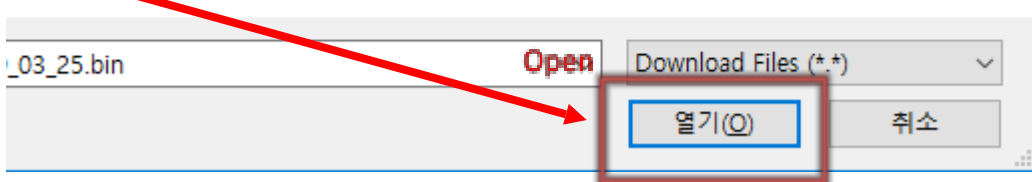
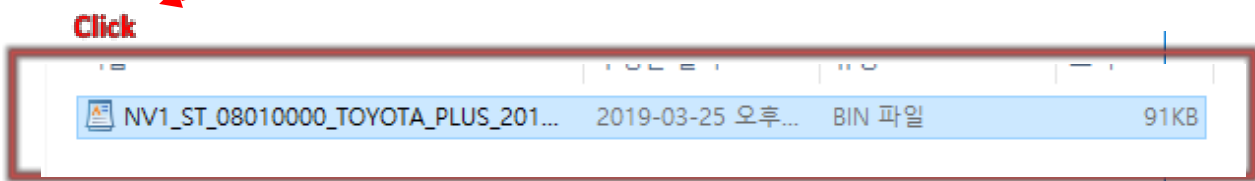
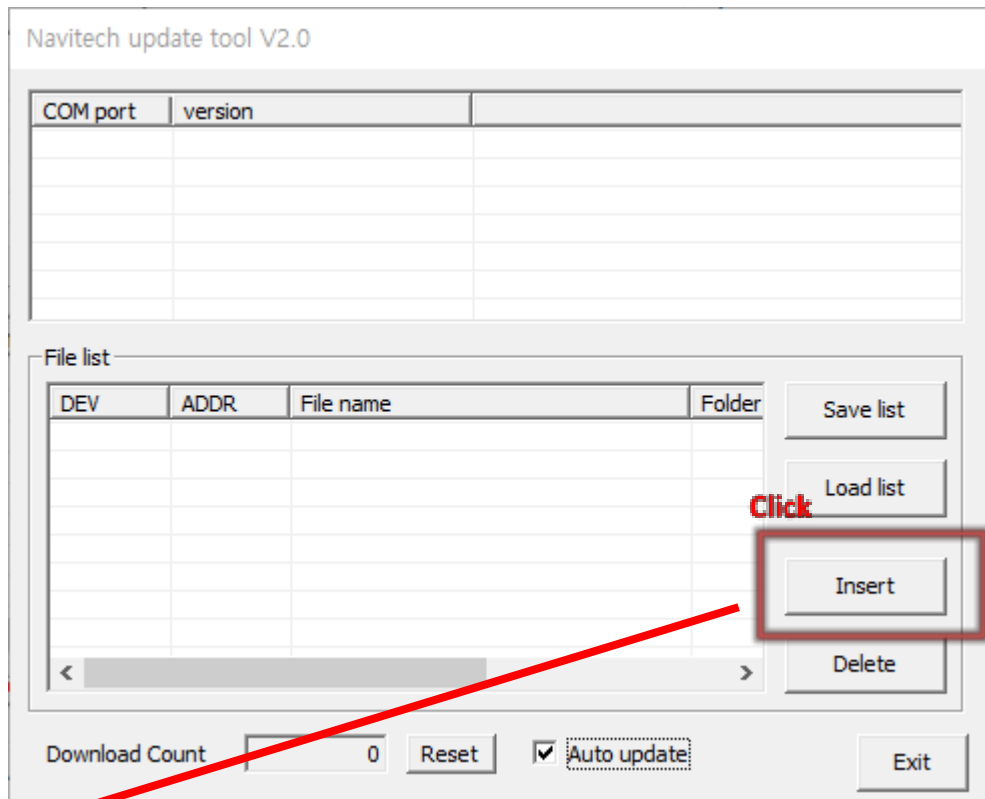
1) Run "navitech update tool.exe"



2) Check "Auto update"

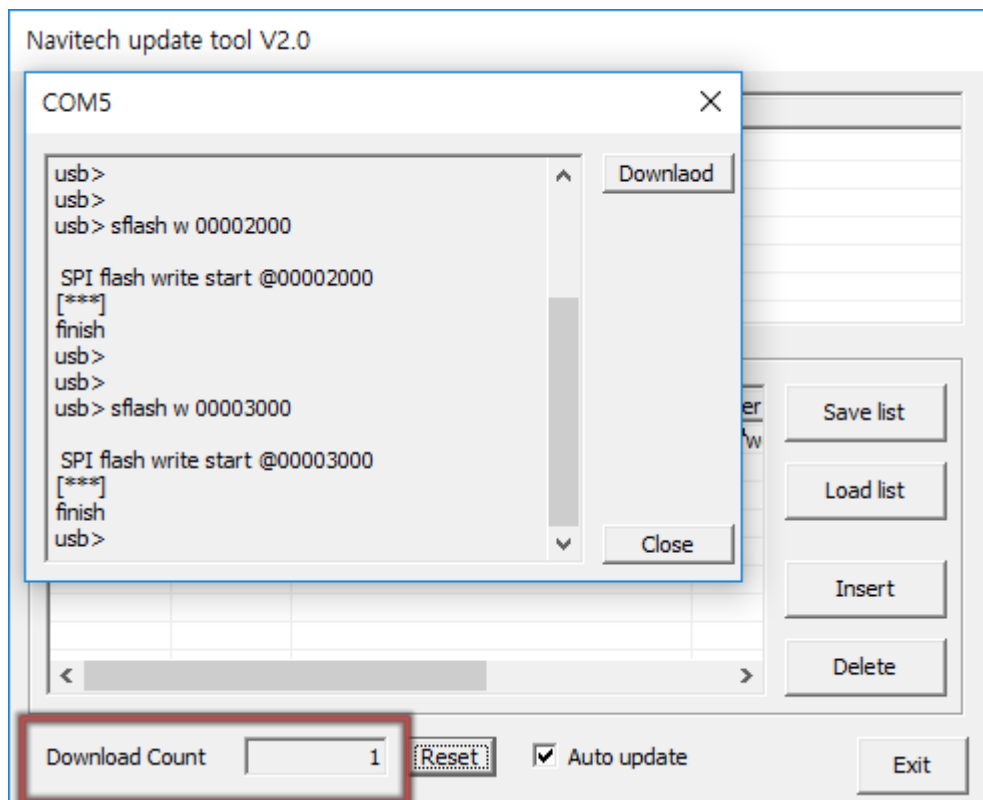
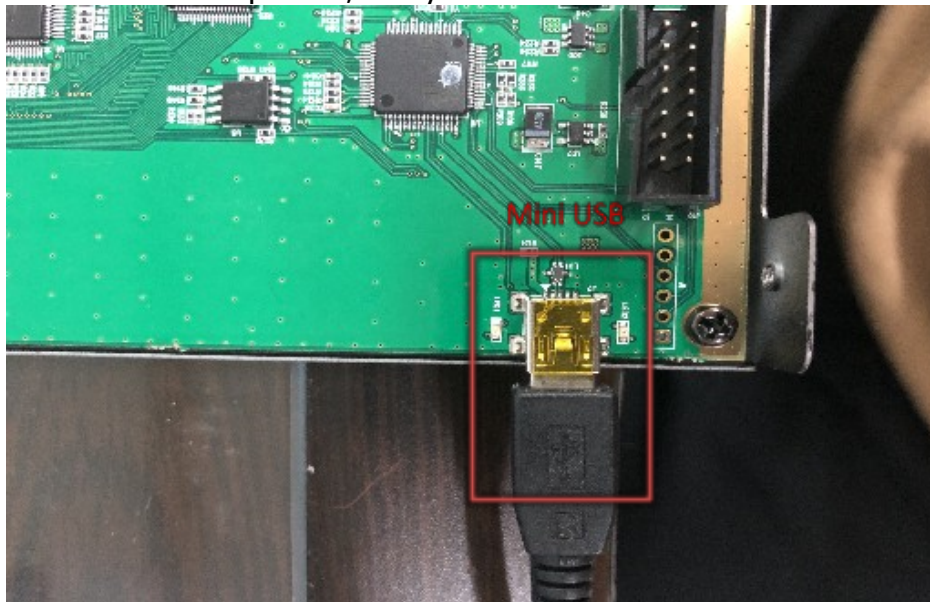


### 3) Insert "\*\*.bin" files



#### 4) Connect USB to interface & PC

\*Power is not required, Only connect Mini usb



< Automatically Updated >

\*Download Counting Number will increase if your update procedure is properly finished.