

PRODUCT FEATURES:

- Retains handle bar mounted radio controls (if equipped).
- Plug and Play. No wire cutting to the OEM harness required.
- Siri Control and Android Control Voice Control function (if aftermarket radio supports these features).

NOTE:

- For 2 speaker systems only.
- For Non-amplified models only.

PARTS INCLUDED:



HBRHD-61B MODULE



HBRHD-61B HARNESS

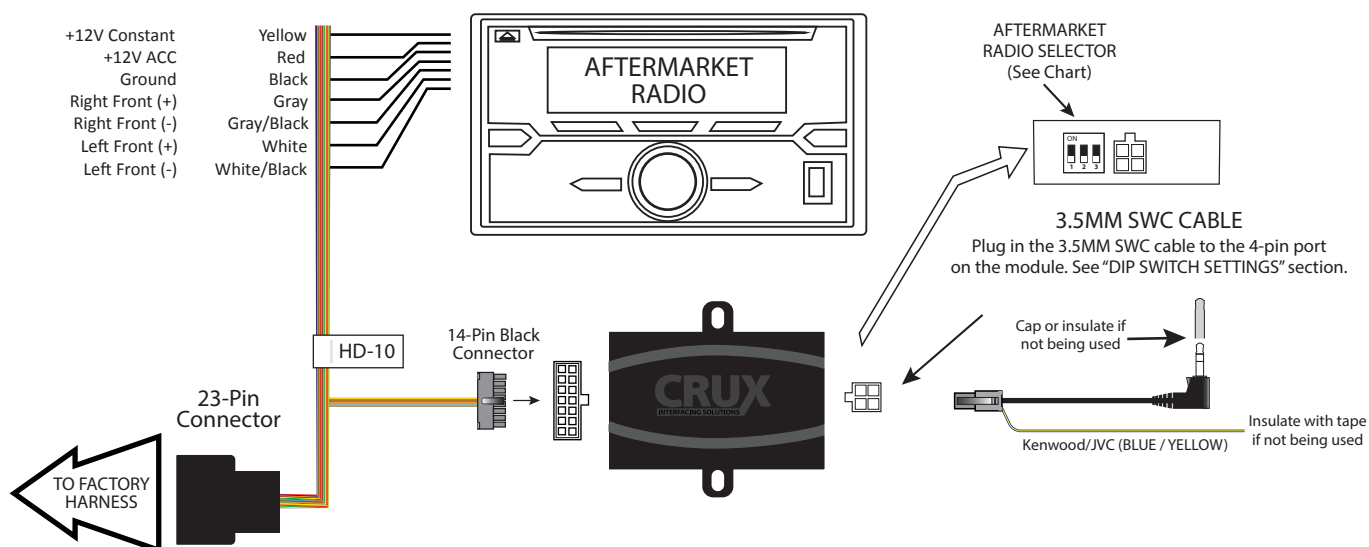


Antenna Adapter



SWC Cable

INSTALLATION DIAGRAM:



DIP SWITCH SETTINGS:

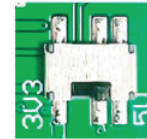
AFTERMARKET RADIO DIP SWITCH SETTINGS:

RADIO BRAND:	DIP#:	1	2	3
Atoto, Dual, Fahrenheit, Jensen, Nakamichi,		OFF	ON	ON
Pioneer, Power Acoustik, Soundstream		OFF	ON	ON
Blaupunkt, Most off-brand Radio		OFF	ON	ON
Alpine		OFF	OFF	OFF
Clarion, Stinger		ON	ON	OFF
Kenwood		ON	ON	ON
JVC		ON	OFF	ON
Boss, Old Sony		ON	OFF	OFF
New Sony (with CarPlay)		OFF	ON	OFF

SWC MODULE
DIP SWITCH



SWC Troubleshoot option



Located internally
Need to take plastic
Casing off module

- If Steering Wheel Controls don't work or work properly please switch internal dip switch from 3v3 to 5v as shown in picture above.

NOTE: For Atoto, Blaupunkt, Dual, Fahrenheit, Power Acoustik, Soundstream, and most off-brand radios, check the aftermarket radio's manual to see if the SWC buttons need to be programmed.

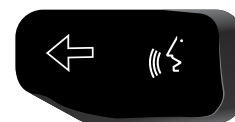
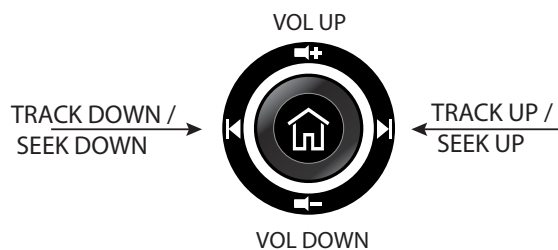
3.5MM SWC CABLE

Plug in the 3.5MM to 4-Pin SWC cable to the SWC module.

NOTE: Insulate the Blue/Yellow wire or 3.5mm plug if not being used.

HANDLE BAR CONTROL FUNCTIONS:

Left Handle Bar Controls



VOICE CONTROL
(requires Aftermarket
radio to have SIRI Control
or ANDROID Control feature)

VEHICLE APPLICATIONS:

Harley-Davidson

2014-Up Electra Glide*
2014-Up Limited*
2015-Up Road Glide*

2014-Up Street Glide*
2014-Up Ultra*

* NOTE: Non-amplified models only

