

PRODUCT FEATURES:

- Works with Amplified and Non-Amplified For, Lincoln and Mercury vehicles
- Retains Factory-installed Subwoofer.
- Retains Steering Wheel Controls via builtin, pre-programmed interface.
- With navigation outputs (Reverse gear, Illuminstion, Speed signal and Parking brake)
- Provides Accessory Power (2A MAX).
- Retains factory Aux and rear seat entertainment inputs.
- Supports Sony, Shaker, THX and non amplified sound systems.

PARTS INCLUDED:



SWRFD-60 Module



SWRFD-60 Harness

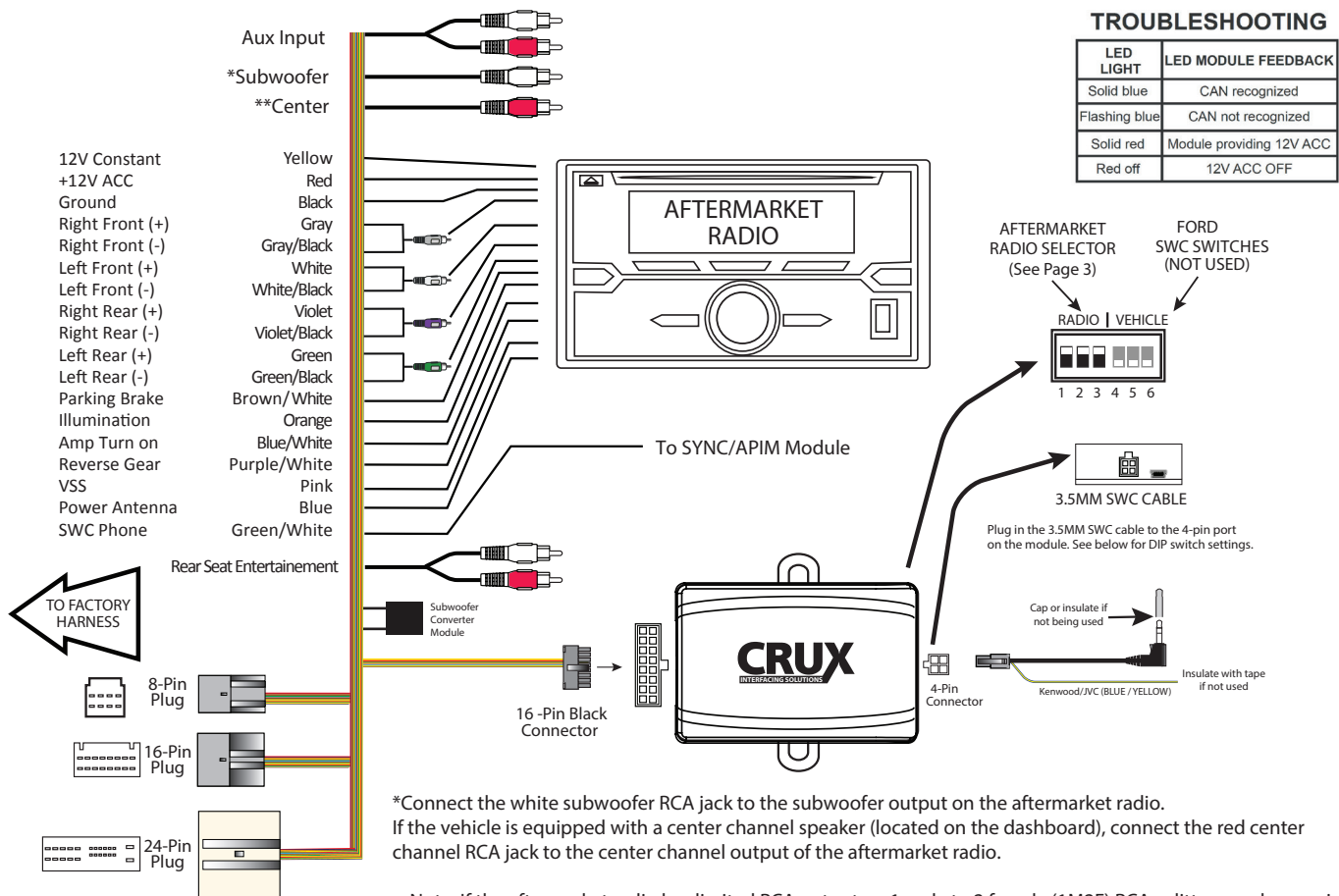


SWC Cable

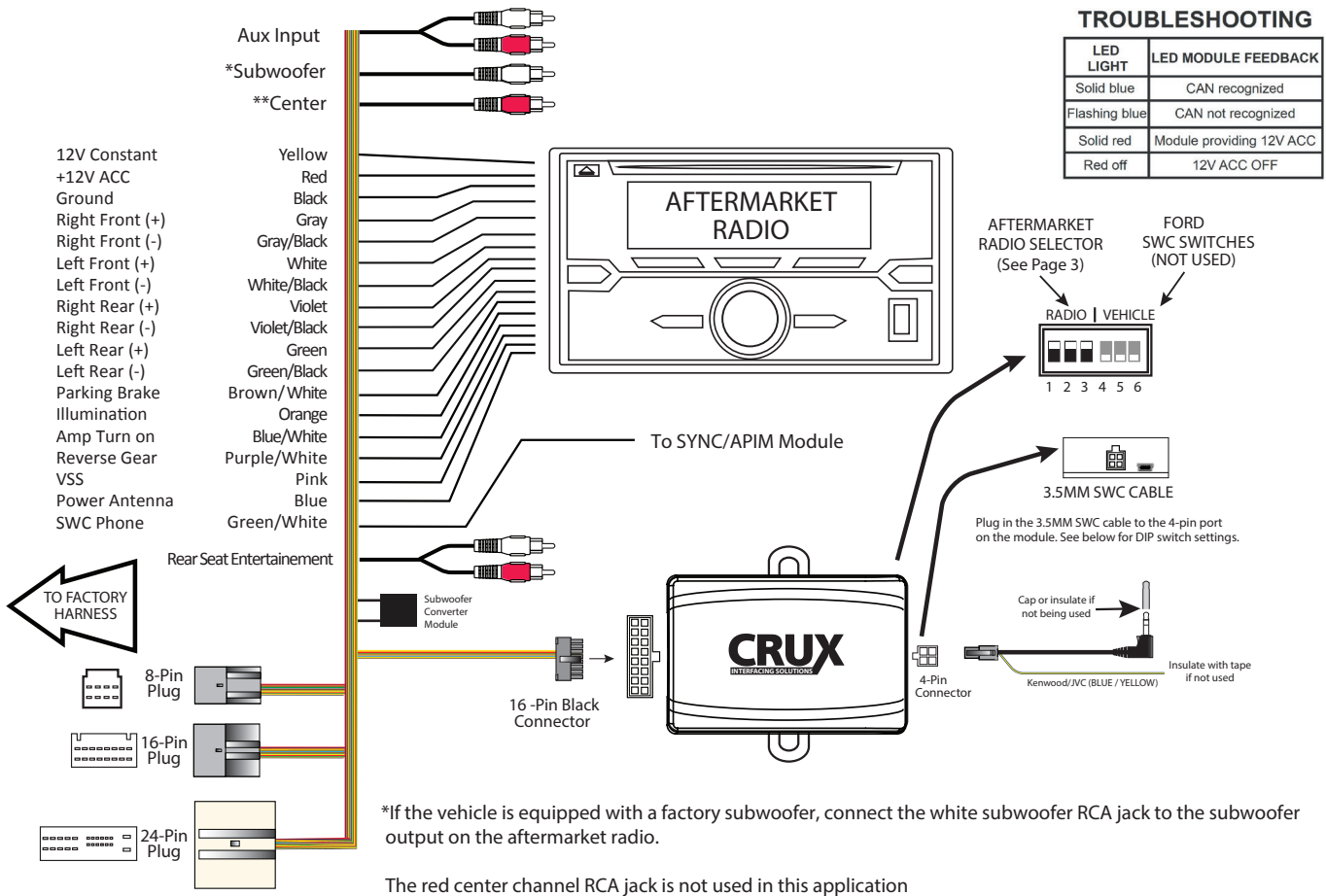


Antenna Adapter

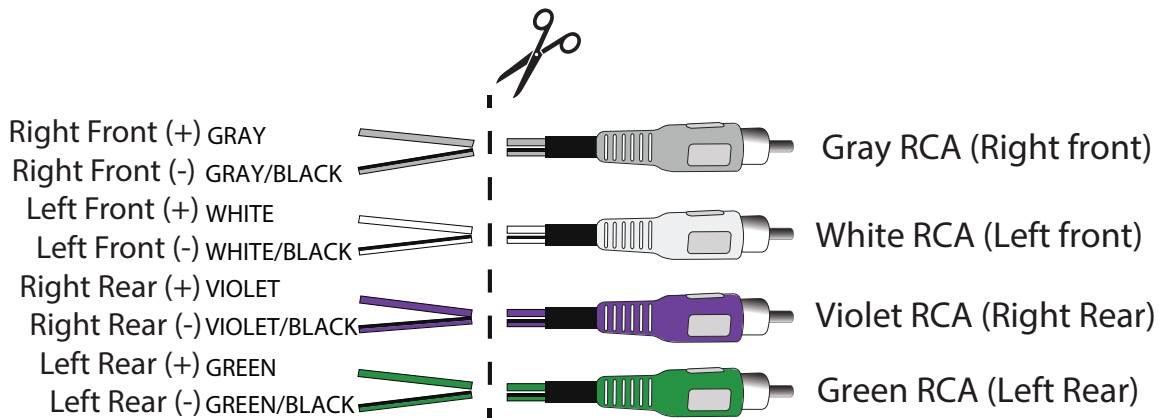
INSTALLATION DIAGRAM FOR AMPLIFIED VEHICLES:



INSTALLATION DIAGRAM FOR NON-AMPLIFIED VEHICLES:



* For Non-Amplified systems please cut RCA , and mate colored wires to the appropriate aftermarket radio speaker wires

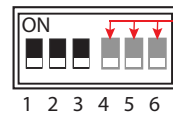


DIP SWITCH SETTINGS:

AFTERMARKET RADIO DIP SWITCH SETTINGS:

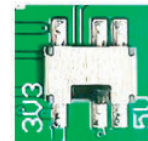
RADIO BRAND:	DIP#:	1	2	3
Atoto, Dual, Fahrenheit, Jensen, Nakamichi,		OFF	ON	ON
Pioneer, Power Acoustik, Soundstream		OFF	ON	ON
Blaupunkt, Most off-brand Radio		OFF	ON	ON
Alpine		OFF	OFF	OFF
Clarion		ON	ON	OFF
Kenwood		ON	ON	ON
JVC		ON	OFF	ON
Boss, Old Sony		ON	OFF	OFF
New Sony (with CarPlay)		OFF	ON	OFF

**SWC MODULE
DIP SWITCH**



NOTE:
DIP SWITCHES
4 - 6 ARE NOT
USED

SWC Troubleshoot option



Located internally
Need to take plastic
Casing off module

- If Steering Wheel Controls don't work or work properly please switch internal dip switch from 3v3 to 5v as shown in picture above.

NOTE: For Atoto, Blaupunkt, Dual, Fahrenheit, Nakamichi, Power Acoustik, Soundstream, and most off-brand radios, check the aftermarket radio's manual to see if the SWC buttons need to be programmed.

4-PIN SWC CABLE

Use the proper 3.5MM to 4-Pin SWC cable for the aftermarket radio you are using.

OPTION A is used for ALPINE, CLARION. Use the Blue/Yellow wire for JVC and KENWOOD units.
OPTION B is used for ATOTO, BLAUPUNKT, BOSS, DUAL, FARENHEIT, JENSEN, POWER ACOUSTIK,
PIONEER, SONY, SOUNDSTREAM and Most Off-Brand Radios.

NOTE: Cap or insulate the 3.5mm plug or Blue/Yellow wire if not being used.

For aftermarket radios that have wires for SWC connections, cut off the 3.5mm plug on the Crux SWC Cable (option B) and connect the SWC wires as follows:



Note that there are some radios that only have SWC1 and SWC2, in this case "shield" does not need to be connected.



VEHICLE APPLICATIONS:

FORD

2007 – 2010 Edge
2008 – 2012 Escape
2007 – 2014 Expedition
2006 – 2010 Explorer
2007 – 2010 Explorer Sport Trac
2009 – 2014 F-150
2008 – 2012 F-250
2008 – 2012 F-350
2008 – 2012 F-450
2005 – 2007 Five Hundred
2009 – 2012 Flex
2008 – 2011 Focus
2005 – 2007 Freestyle
2006 – 2012 Fusion
2005 – 2013 Mustang
2008 – 2012 Taurus

LINCOLN

2009 – 2012 MKS
2007 – 2010 MKX
2007 – 2012 MKZ
2007 – 2014 Navigator
2006 – 2006 Zephyr

MERCURY

2007 – 2011 Mariner
2006 – 2011 Milan
2005 – 2007 Montego
2006 – 2010 Mountaineer

MAZDA

2009 – 2011 Tribute

NOTE: Not compatible in vehicles with Sync systems

NOTE: Supports Sony, Shaker, THX and non amplified sound systems.

NOTE: This product does not include a dashkit. For combo kit which includes a dashkit use Crux Product DKFD-60

STEERING WHEEL CONTROL TROUBLE SHOOTING:

Note: Identify Alpine SWC learning radios by checking for three SWC cables and a SWC learn menu, instead of a 3.5mm SWC input.

If Interface has one SWR-100 Cable included

1 - Find the included SWC adapter cable.



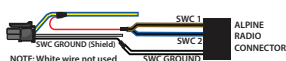
2 - **Prepare the SWC Cable:** Cut the SWC cable. You will find a red wire, a white wire, and a ground (shield) wire inside.



3 - **Adjust the Module Settings:** Set the module to the Pioneer dip switch setting. This configures the module to communicate correctly with the Alpine radio.

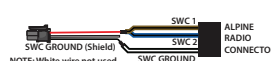
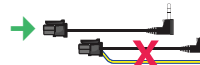
4 - **Configure the Alpine Radio:** On your Alpine radio, select the setting that includes an adapter for SWC. This ensures the radio will recognize the steering wheel controls.

5 - **Connect the Wires:** Connect both the SWC1 and SWC2 wires from aftermarket radio to the red wire from our SWC cable. Connect the SWC ground wire to the shield (ground) wire of our SWC cable. These steps should enable the steering wheel controls on your Alpine iLX series radio.



If Interface has two SWR Cables included

1 - Identify appropriate SWC adapter cable. Do not use cable with Blue / Yellow wire.



6. **Program the SWC:** Navigate to the SWC settings on your Alpine radio to assign and test each control function.

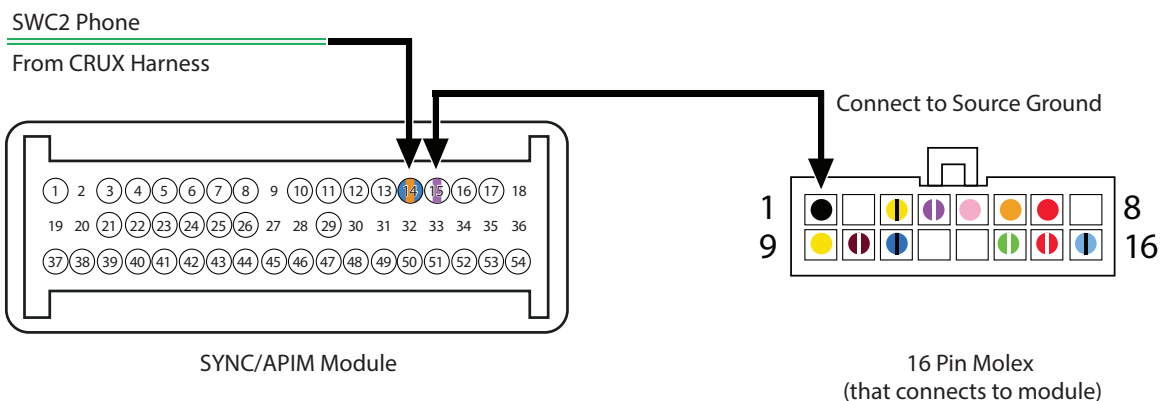


VEHICLE APPLICATIONS:

General Instructions for SWC Phone button (SYNC Harness Connection)

- 1 -Required only if the vehicle is equipped with SYNC and does not have a factory navigation system.
- 2 -Disassemble the dashboard and remove the factory radio without disconnecting it.
- 3 -Use a multimeter to test the SWC 2 (phone button wire on vehicle):
 - Place BLACK probe to ground (-).
 - Place RED probe to SWC 2 (phone button wire).
 - If SYNC is present, the multimeter should show approximately 5 volts, dropping when pressing the steering wheel voice, phone, or OK button.
- 4 -Tap the SWC 2 (phone input wire).
- 5 -Please identify your vehicle's SYNC/APIM from the groups below:

Group 1			
Ford			5a -Connect the Crux Green/White wire of the FD-60 T-harness to the SWC 2 (Pin14 Blue/Orange) (phone button INPUT wire) going to the steering wheel. Take pin 15 violet/white (SWC2 ground wire) and tap to Source ground or ground on Aftermarket Radio Center Console, Right Side, Harness Going to the Back
2007-2010	EDGE	w/ SYNC, w/out factory nav	
2007-2014	Expeition	w/ SYNC, w/out factory nav	
2010-2012	Taurus	w/ SYNC, w/out factory nav	
2008-2012	Taurus X	w/ SYNC, w/out factory nav	
Lincoln			
2009-2012	MKS	w/ SYNC, w/out factory nav	
2010-2012	MKT	w/ SYNC, w/out factory nav	
2007-2010	MKX	w/ SYNC, w/out factory nav	
2007-2012	MKZ	w/ SYNC, w/out factory nav	
Mercury			
2008-2009	Sable	w/ SYNC, w/out factory nav	



VEHICLE APPLICATIONS:

Group 2			
<div><div><div>Ford</div><div>2010-2012</div><div>Fusion</div></div><div>w/ SYNC, w/out factory nav</div></div> <div><div><div>Mercury</div><div>2006-2011</div><div>Milan</div></div><div>w/ SYNC, w/out factory nav</div></div>			<div>5a -Connect the Crux Green/White wire of the FD-60 T-harness to the SWC 2 (Pin14 Blue/Orange) (phone button INPUT wire) going to the steering wheel. Take pin 15 violet/white (SWC2 ground wire) and tap to Source ground or ground on Aftermarket Radio</div> <div>Center Console, Right Side, In Front of Armrest</div>

Group 3			
<div><div><div>Lincoln</div><div>2007-2014</div><div>Navigator</div></div><div>w/ SYNC, w/out factory nav</div></div> <div><div><div>Ford</div><div>2007-2009</div><div>Mustang</div></div><div>w/ SYNC, w/out factory nav</div></div>			<div>5a -Connect the Crux Green/White wire of the FD-60 T-harness to the SWC 2 (Pin14 Blue/Orange) (phone button INPUT wire) going to the steering wheel. Take pin 15 violet/white (SWC2 ground wire) and tap to Source ground or ground on Aftermarket Radio</div> <div>SYNC Module (Behind Glove Box or Console Panel)</div>

Group 4			
<div><div><div>Ford</div><div>2008-2012</div><div>Escape</div></div><div>w/ SYNC, w/out factory nav</div></div> <div><div><div></div><div>2008-2011</div><div>Mariner</div></div><div>w/ SYNC, w/out factory nav</div></div>			<div>5a -Connect the Crux Green/White wire of the FD-60 T-harness to the SWC 2 (Pin14 Blue/Orange) (phone button INPUT wire) going to the steering wheel. Take pin 15 violet/white (SWC2 ground wire) and tap to Source ground or ground on Aftermarket Radio</div> <div>Junction Connector, Behind Radio (Passenger Side)</div>

Group 5			
<div><div><div>Ford</div><div>2009-2012</div><div>Flex</div></div><div>w/ SYNC, w/out factory nav</div></div>			<div>5a -Connect the Crux Green/White wire of the FD-60 T-harness to the SWC 2 (Pin14 Blue/Orange) (phone button INPUT wire) going to the steering wheel. Take pin 15 violet/white (SWC2 ground wire) and tap to Source ground or ground on Aftermarket Radio</div> <div>Junction Connector, In Front of Shifter</div>



VEHICLE APPLICATIONS:

Group 6			
Ford			5a -Connect the Crux Green/White wire of the FD-60 T-harness to the SWC 2 (Pin14 Blue/Orange) (phone button INPUT wire) going to the steering wheel. Take pin 15 violet/white (SWC2 ground wire) and tap to Source ground or ground on Aftermarket Radio Passenger Side, Next to Glove Box
2008-2010	F-250	w/out 8" screen w/ SYNC, w/out factory nav	
2008-2010	F-350	w/out 8" screen w/ SYNC, w/out factory nav	
2008-2010	F-450	w/out 8" screen w/ SYNC, w/out factory nav	
2008-2010	F-Super Duty	w/ SYNC, w/out factory nav	
Group 7			
Ford			5a -Connect the Crux Green/White wire of the FD-60 T-harness to the SWC 2 (Pin14 Blue/Orange) (phone button INPUT wire) going to the steering wheel. Take pin 15 violet/white (SWC2 ground wire) and tap to Source ground or ground on Aftermarket Radio Center Dash, Under Tray
2009-2012	F-150	w/ SYNC, w/out factory nav	
Group 8			
Ford			5a -Connect the Crux Green/White wire of the FD-60 T-harness to the SWC 2 (Pin14 Blue/Orange) (phone button INPUT wire) going to the steering wheel. Take pin 15 violet/white (SWC2 ground wire) and tap to Source ground or ground on Aftermarket Radio Heater Box / Console Mid-Harness
2008-2011	Focus	w/ SYNC, w/out factory nav	
Group 9			
Ford			5a -Connect the Crux Green/White wire of the FD-60 T-harness to the SWC 2 (Pin14 Gray/Blue) (phone button INPUT wire) going to the steering wheel. Take pin 15 violet/white (SWC2 ground wire) and tap to Source ground or ground on Aftermarket Radio Center Console, Right Side, Harness Going to the Back
2008-2009	Taurus	w/ SYNC, w/out factory nav	
Group 10			
Ford			5a -Connect the Crux Green/White wire of the FD-60 T-harness to the SWC 2 (Pin14 Brown/White) (phone button INPUT wire) going to the steering wheel. Take pin 15 violet/white (SWC2 ground wire) and tap to Source ground or ground on Aftermarket Radio Center Console, Harness Going to the Back
2006-2010	Explorer	w/ SYNC, w/out factory nav	
2006-2010	Explorer SportTrac	w/ SYNC, w/out factory nav	
Mercury			
2006-2010	Mountaineer	w/ SYNC, w/out factory nav	

