

### PRODUCT FEATURES:

- Retains factory features in select Nissan vehicles while functioning with an aftermarket radio.
- Pre-programmed to retain factory Medium Speed CAN-Data Bus Steering Wheel Controls.
- Includes antenna adapter.
- Retains factory phone buttons.
- Retains factory USB input.
- Retains factory camera (not 360 panoramic camera).
- Provides outputs for Reverse & parking brake.
- Retains factory auxiliary input

### PARTS INCLUDED:



SWRNS-63M MODULE



SWRNS-63M Harness



Antenna Adapter



SWC Cables

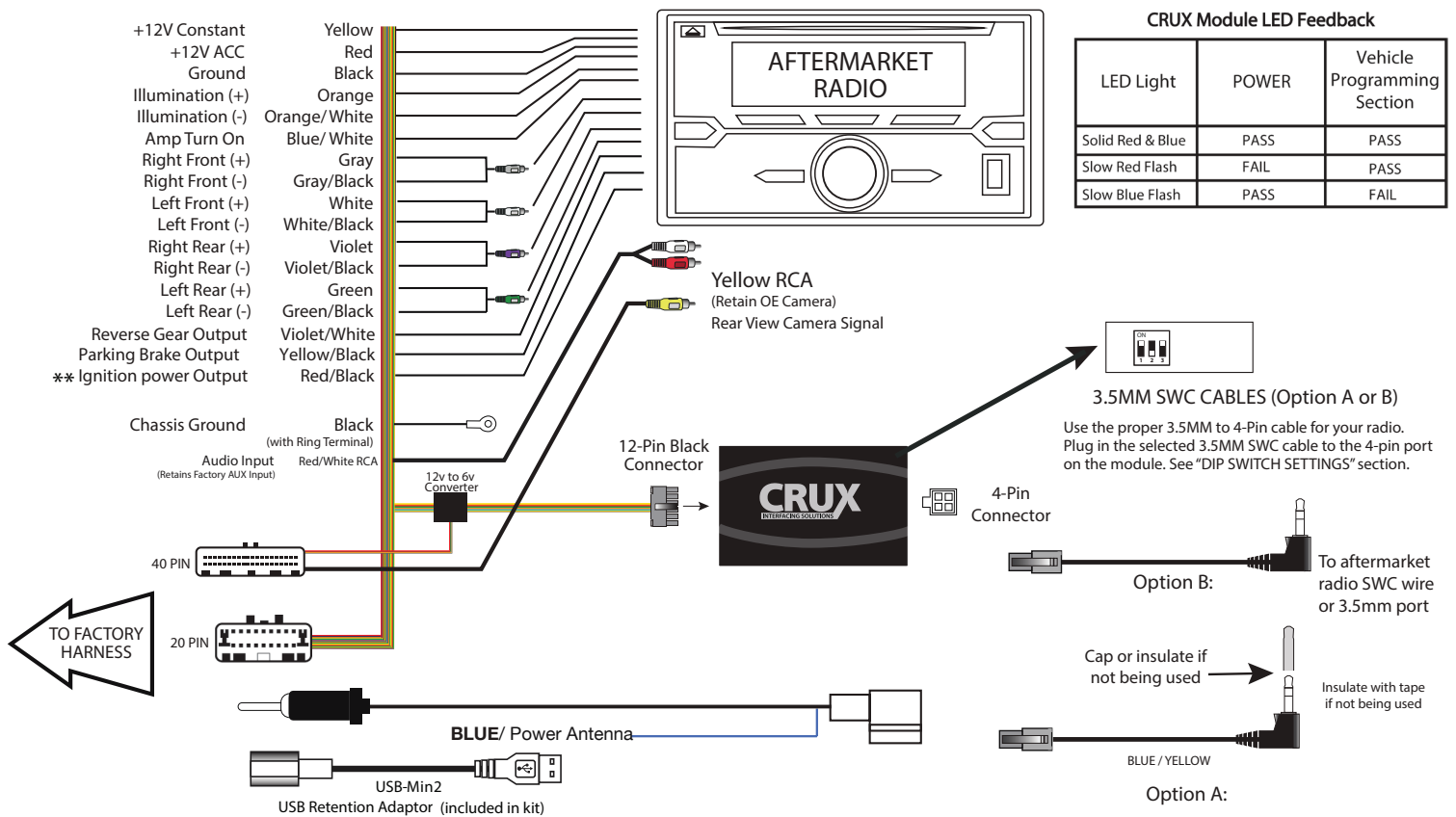


USB Retention Cable



Optional Acc wire

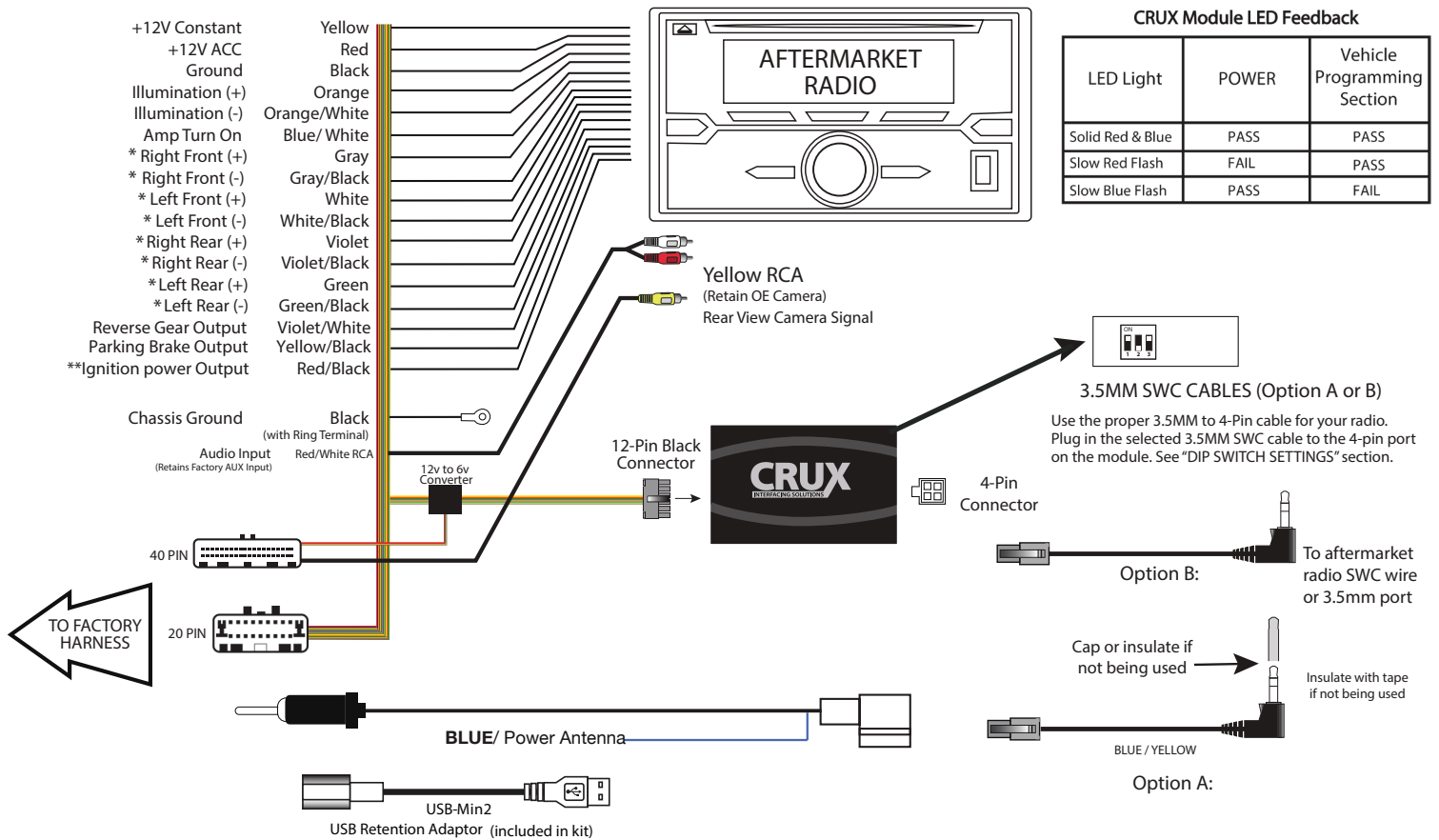
### INSTALLATION DIAGRAM FOR AMPLIFIED VEHICLES:



• For Amplified Systems Please Do Not Cut RCA to get better audio quality  
\*\* Please see page 2 for note



### INSTALLATION DIAGRAM FOR NON-AMPLIFIED VEHICLES:

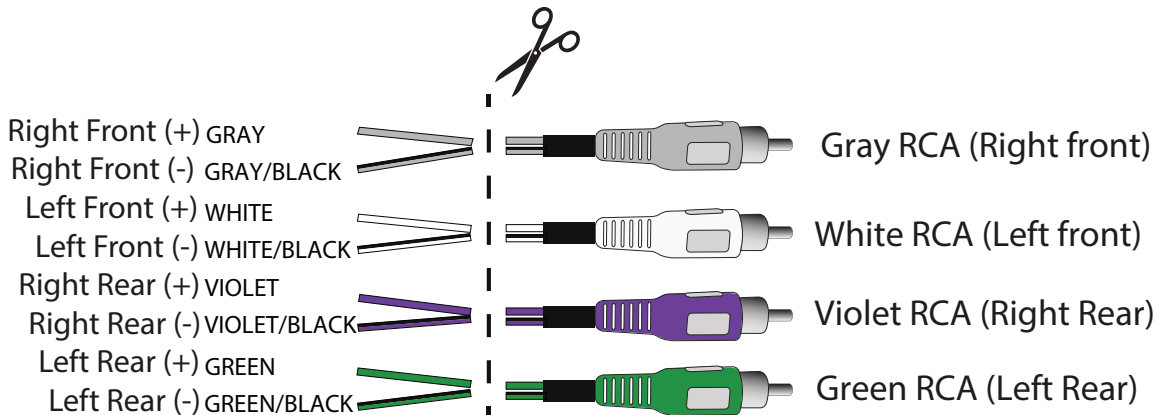


**CRUX Module LED Feedback**

LED Light	POWER	Vehicle Programming Section
Solid Red & Blue	PASS	PASS
Slow Red Flash	FAIL	PASS
Slow Blue Flash	PASS	FAIL

**\*\* ACC Power Output Note:** For vehicles equipped with intelligent key systems (Push Start Button) +12 V accessory red wire may not activate radio, must use ignition power output (Red/Black wire) instead.

\* For Non-Amplified systems please cut RCA , and mate colored wires to the appropriate aftermarket radio speaker wires



## DIP SWITCH SETTINGS:

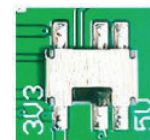
### AFTERMARKET RADIO DIP SWITCH SETTINGS:

RADIO BRAND:	DIP#:	1	2	3
Atoto, Dual, Fahrenheit, Jensen, Nakamichi,		OFF	ON	ON
Pioneer, Power Acoustik, Soundstream		OFF	ON	ON
Blaupunkt, Most off-brand Radio		OFF	ON	ON
Alpine		OFF	OFF	OFF
Clarion, Stinger		ON	ON	OFF
Kenwood		ON	ON	ON
JVC		ON	OFF	ON
Boss, Old Sony		ON	OFF	OFF
New Sony (with CarPlay)		OFF	ON	OFF

SWC MODULE  
DIP SWITCH



### SWC Troubleshoot option



Located internally  
Need to take plastic  
Casing off module

- If Steering Wheel Controls don't work or work properly please switch internal dip switch from 3v3 to 5v as shown in picture above.

**NOTE:** For Atoto, Blaupunkt, Dual, Fahrenheit, Nakamichi, Power Acoustik, Soundstream, and most off-brand radios, check the aftermarket radio's manual to see if the SWC buttons need to be programmed.

### 4-PIN SWC CABLE

Use the proper 3.5MM to 4-Pin SWC cable for the aftermarket radio you are using.

OPTION A is used for ALPINE, CLARION, JVC, and KENWOOD units (Blue/Yellow wire is attached)  
OPTION B is used for ATOTO, BLAUPUNKT, BOSS, DUAL, FARENHEIT, JENSEN, POWER ACOUSTIK, PIONEER, SONY, SOUNDSTREAM and Most Off-Brand Radios.

NOTE: Cap or insulate the 3.5mm plug or Blue/Yellow wire if not being used.

For aftermarket radios that have wires for SWC connections, cut off the 3.5mm plug on the Crux SWC Cable (option B) and connect the SWC wires as follows:

Note that there are some radios that only have SWC1 and SWC2, in this case "shield" does not need to be connected.



RED to SWC Key 1  
WHITE to SWC Key 2  
SHIELD to SWC Ground

## VEHICLE APPLICATIONS:

### NISSAN

2015 - 2017 Murano Base radio w/ Nav w/o Bose

2015 - 2017 Murano w/ Bose w/ Nav

**NOTE:** For base radio w/ display & Non-Nav use CRUX Part #SWRNS-63S

### NISSAN INFOTAINMENT WITH MAP AND CAMERA



**NOTE:** Some SWC functions might not be retained for the following radio series:  
Planet Audio P9900CPA, Jensen CAR 710, Atoto F7, and similar radios of these brands.

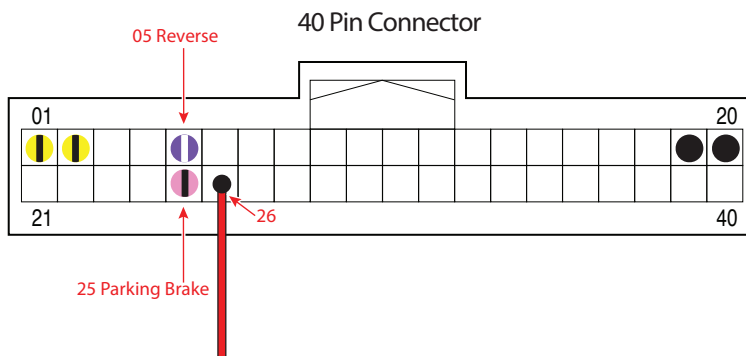


## ALTERNATIVE ACCESSORY POWER TROUBLE SHOOTING:

**Note:** If you are experiencing issues with accessory power from the module, connect the provided alternative power wire to the CRUX connector and then to the aftermarket radio



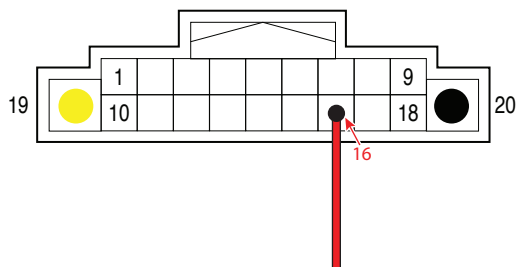
### Crux Female Connector Viewed from Wire Side



#### For Vehicles with PUSH START ignition

Attach the provided red wire to pin 26 on the CRUX 40-pin connector.

### 20 Pin Connector



#### For Vehicles with STANDARD KEY

Attach the provided red wire to pin 16 on the CRUX 20-pin connector.

### Crux Female Connector Viewed from Wire Side

