

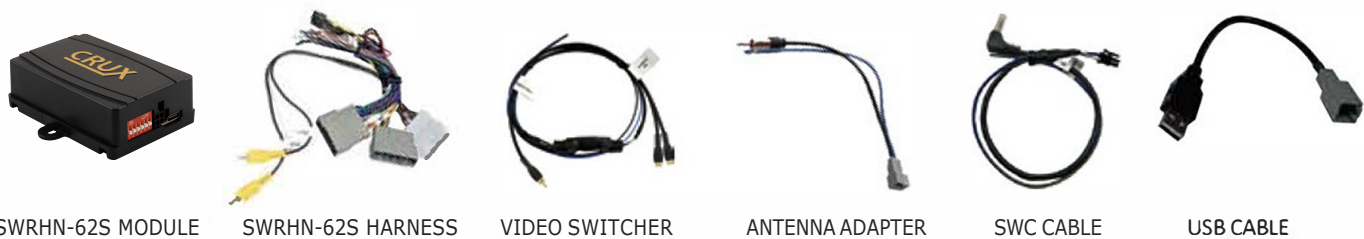
PRODUCT FEATURES:

- Retains factory features in select Honda vehicles while functioning with an aftermarket radio.
- Pre-programmed to retain factory Steering Wheel Controls.
- Provides navigational output: Reverse, Illumination, Parking Brake, Vehicle Speed Sense & Lane Watch Camera Outputs.
- Retains factory Multi-Angle Rear View Camera & Lanewatch camera, & Auxiliary Input.
- Includes Antenna adapter & USB retention cable.

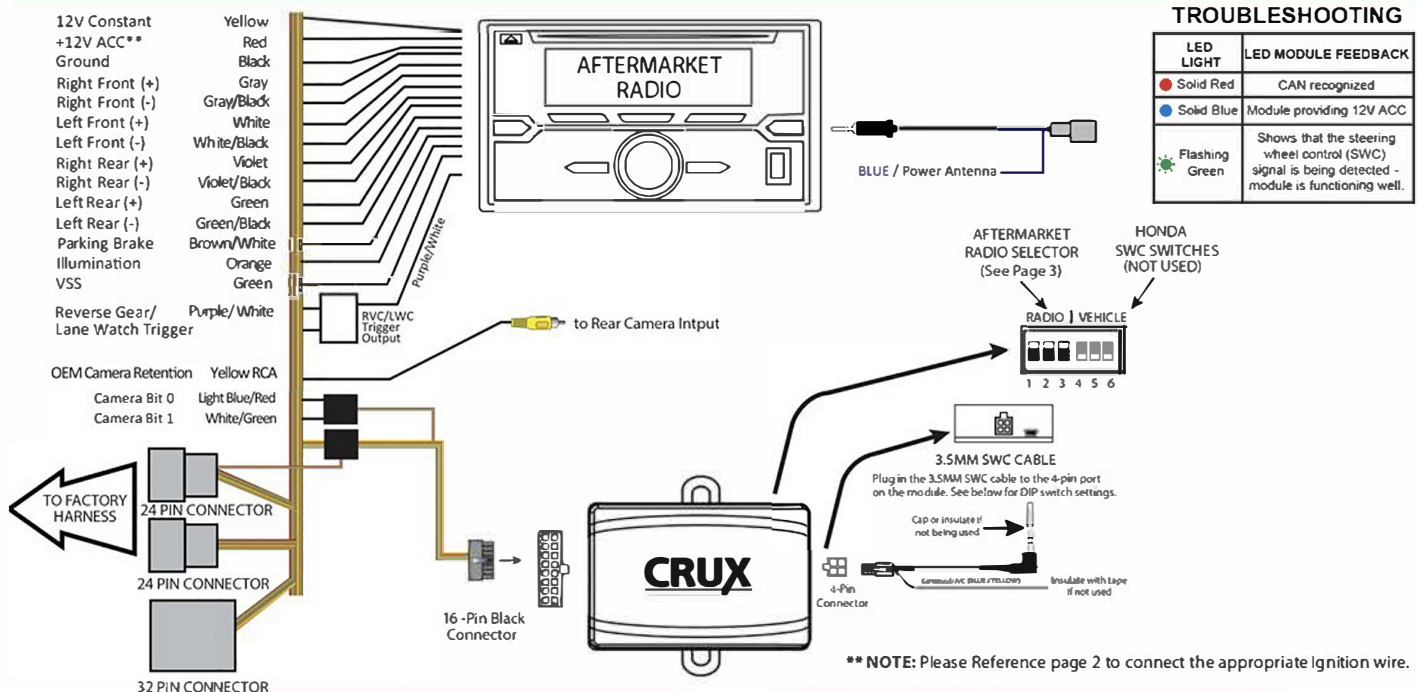
NOTES:

1. Does not support Amplified vehicles.
2. Does not retain Rear Seat Entertainment system (RSE).
3. Includes Crux Video Switcher to retain lane watch and rear view camera retention.
4. If Vehicle does not have lane watch camera interface can be used .
5. Climate controls will not be retained if originally operated via the factory radio touchscreen.

PARTS INCLUDED:



INSTALLATION DIAGRAM:



ALTERNATIVE ACCESSORY POWER TROUBLE SHOOTING:

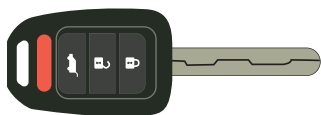
Note: If you are experiencing issues with accessory power from the module, connect the provided alternative power wire to the CRUX connector and then to the aftermarket radio



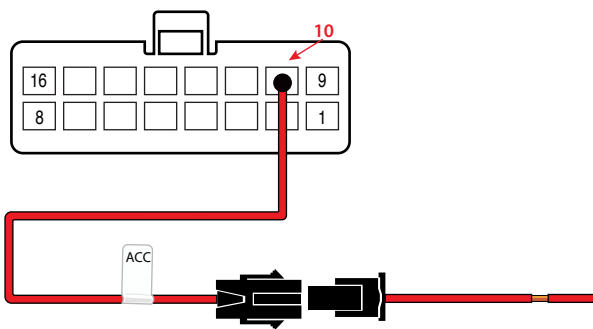
HARNESS VIEW

For Vehicles with STANDARD KEY

If your vehicle uses a regular key, connect the red accessory wire using the 2-pin female Molex connector to the matching 2-pin male Molex connector as shown in the diagram, then connect the wire to the aftermarket radio.



16 Pin Molex Connector

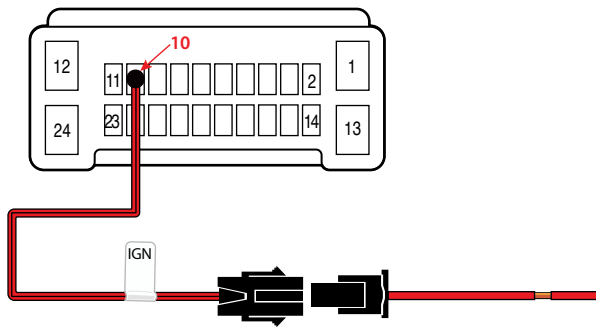


For Vehicles with PUSH START ignition

If your vehicle has a push-start button, connect the red/black Ignition ACC wire using the 2-pin female Molex connector to the matching 2-pin male Molex connector as shown in the diagram, then connect the wire to the aftermarket radio.



24 Pin Connector

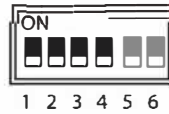


DIP SWITCH SETTINGS:

AFTERMARKET RADIO DIP SWITCH SETTINGS:

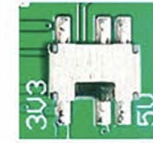
RADIO BRAND:	DIP:	1	2	3	4
Atoto, Dual, Farenheit, Jensen, Pioneer		OFF	OFF	ON	ON
Power Acoustik, Soundstream		OFF	OFF	ON	ON
Blaupunkt, Most off-brand Radios		OFF	OFF	ON	ON
Alpine		OFF	OFF	OFF	OFF
Clarion		OFF	ON	ON	OFF
Kenwood		OFF	ON	ON	ON
JVC		OFF	ON	OFF	ON
Boss, Old Sony		OFF	ON	OFF	OFF
New Sony		OFF	OFF	ON	OFF
SWC Learning Radios*		ON	OFF	OFF	ON
NeW Boss		ON	OFF	ON	OFF

SWC MODULE DIP SWITCH



NOTE:
DIP Switches
5-6 are for
vehicle settings

SWC Troubleshoot option



Located internally
Need to take plastic
Casing off module

- If Steering Wheel Controls don't work or work properly please switch internal dip switch from 3v3 to 5v as shown in picture above.

NOTE: For Atoto, Blaupunkt, Dual, Farenheit, Nakamichi, Power Acoustik, Soundstream, and most off-brand radios, check the aftermarket radio's manual to see if the SWC buttons need to be programmed.

*For SWC Learning Radios specific steps are required please scan the QR code on the right.

SPECIAL VEHICLE DIP .SWITCH SETTING:

VEHICLE SETTING: DIP#:

Civic 5" with color odometer display (2019-UP) OFF ON



SWC MODULE DIP SWITCH



TROUBLE SHOOTING FOR SWC LEARNING RADIOS



3.5MM SWC CABLE

Plug in the 3.5MM to 4-Pin SWC cable and set the DIP switches to the aftermarket radio you are using.

NOTE: Insulate the Blue/Yellow wire or 3.5mm plug if not being used.

For aftermarket radios that have wires for SWC connections, cut off the 3.5mm plug on the Crux SWC Cable and connect the SWC wires as follows:



Note that there are some radios that only have SWC1 and SWC2, in this case "shield" does not need to be connected.

INSTALLATION INSTRUCTIONS:



1. Using a plastic pry tool, remove the left and right dash trims.

2. The dash trims are held by 4 clips.





3. Carefully pull out the AC control module and unplug the connectors.



4. Remove the 2 screws holding the radio.



5. Pull out the radio.



6. Unplug the radio connectors.



7. Make the connections between the SWRHN-62S harness and the aftermarket radio harness. Plug in the backup camera RCA



8. Plug in the SWRHN-62S T-harness and the antenna adapter to the vehicle harness.

VEHICLE APPLICATIONS:

Honda

- 2017 - 2021 Civic (w/ 7 inch screen)
- 2016 - 2020 Civic Coupe EX-T, EX-L, Touring
- 2017 - 2021 Civic Hatchback EX-L, Sport Touring
- 2016 - 2021 Civic Sedan EX, EX-L, Touring
- 2017 - 2020 Civic Si
- 2017 - 2021 Civic Type R
- 2018 - 2020 Fit (w/ 7 inch screen)
- 2019 - 2022 HR-V EX / EX-L/Touring (w/ 7 inch screen w/ lane watch)

*NOTE: Except Type R, Touring, Si, or Hybrid Model

*NOTE: All applications in this chart has the factory 7" and lane watch camera equipped.

NOTE: Vehicles equipped with dual-zone climate control that display temperature settings on the factory radio screen will lose this on-screen display when the factory radio is replaced with an aftermarket unit.

NOTE: Vehicles with a Driver Information Interface (DII) in the instrument panel will lose most features of the icons on the display after installing an aftermarket radio. Only the music and phone icons will remain. To retain seek up/down functions, select the music icon. To retain Bluetooth phone button functions, select the phone icon.



MULTI-ANGLE REAR VIEW CAMERA

The Crux SWRHN-62S retains the factory Multi-Angle Rearview Camera functionality. Use the factory source button on the steering to switch between the available camera views. Follow steps below.



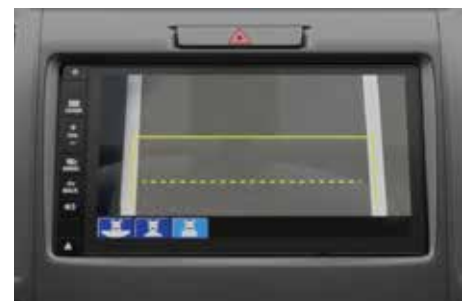
Place vehicle in reverse for Default camera view



For wide angle view press source button for 1 second



For top down camera view press source button for 5 second



LANE WATCH CAMERA RETENTION INSTALLATION:

