



SWRSU-38C

Radio Replacement with Steering Wheel Control Retention for
Select Non-Amplified & Rockford Fosgate Amplified Subaru Vehicles | 2015-UP

PRODUCT MANUAL
VER.032526

CONTACT

ADDRESS:

CRUX Interfacing Solutions
21541 Nordhoff St. Unit C,
Chatsworth, CA 91311

PHONE:

(818) 609-9299

E-MAIL:

support@cruxinterfacing.com
sales@cruxinterfacing.com

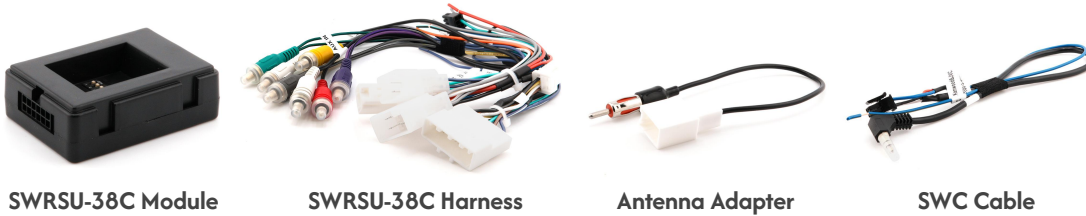
WEBSITE:

www.cruxinterfacing.com

PRODUCT FEATURES:

- Retains factory features in select Subaru vehicles while functioning with an aftermarket radio.
- Pre-programmed to retain factory Steering Wheel Controls.
- Retains StarLink functionality.
- Retains factory Auxiliary Input.
- Retains factory backup camera. (see note on diagram below)
- Includes antenna adapter.

PARTS INCLUDED:



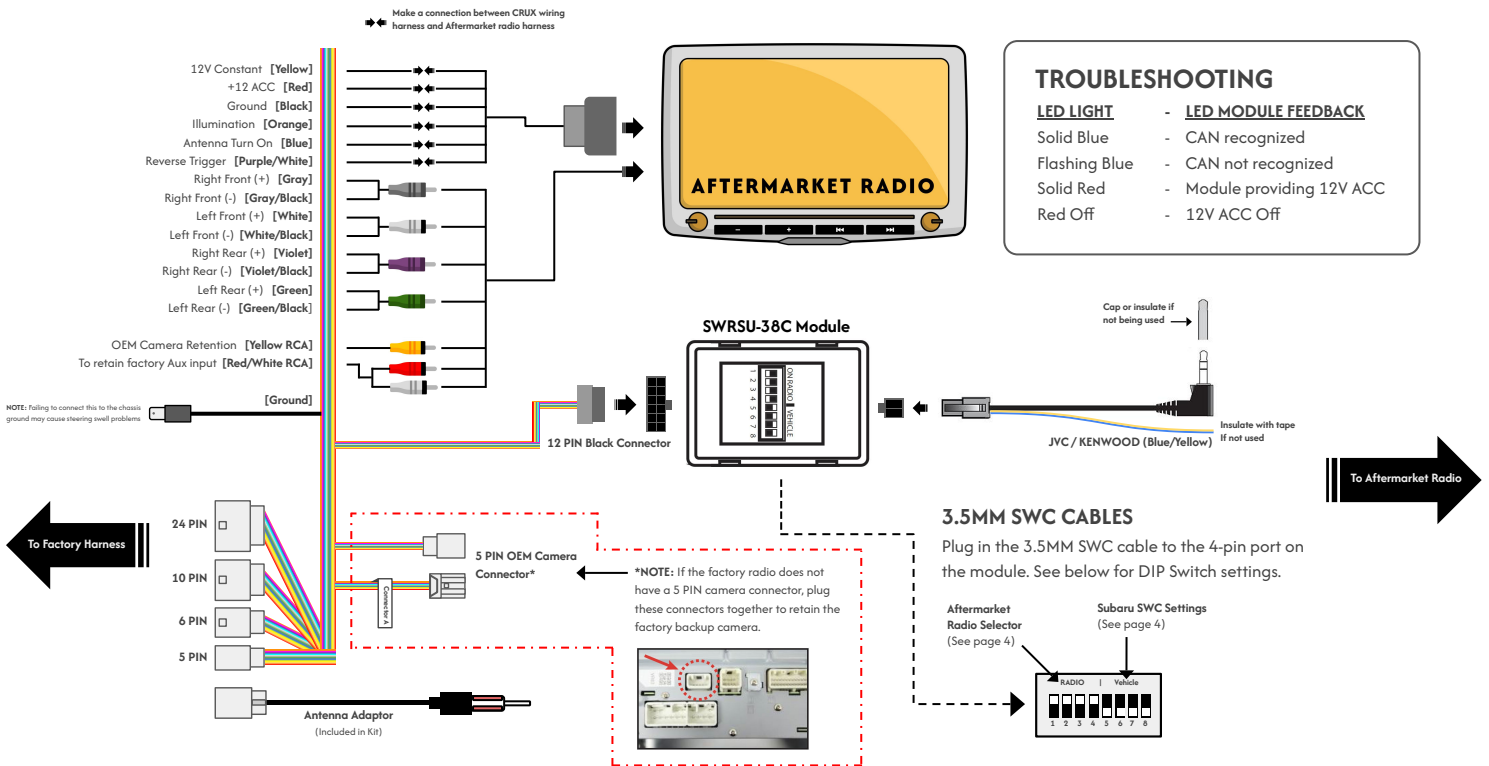
SWRSU-38C Module

SWRSU-38C Harness

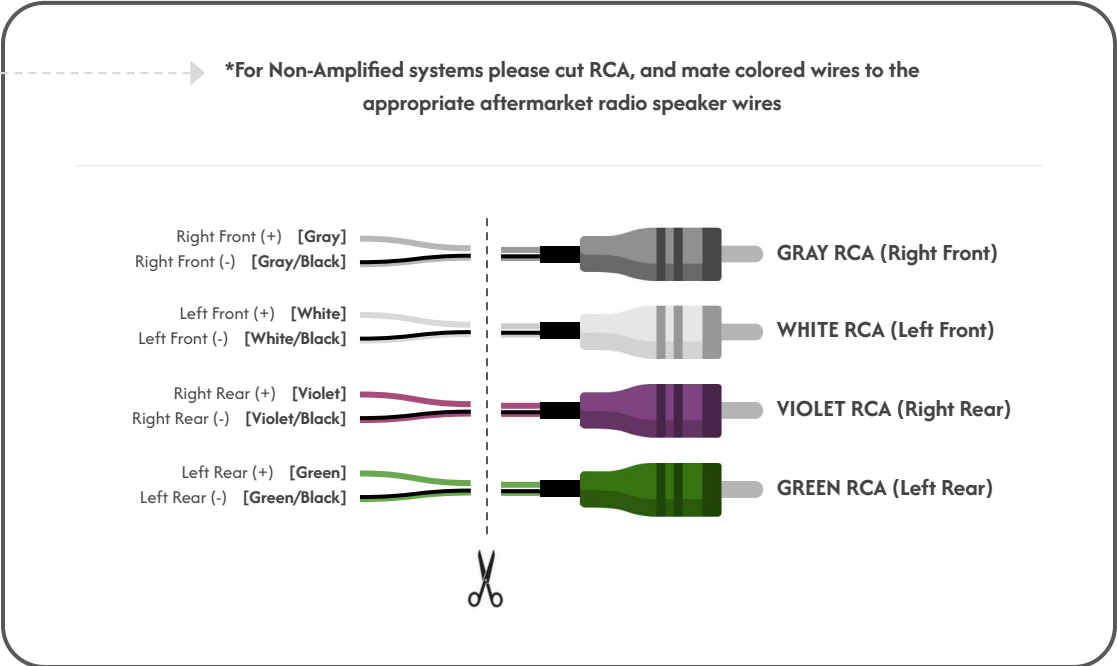
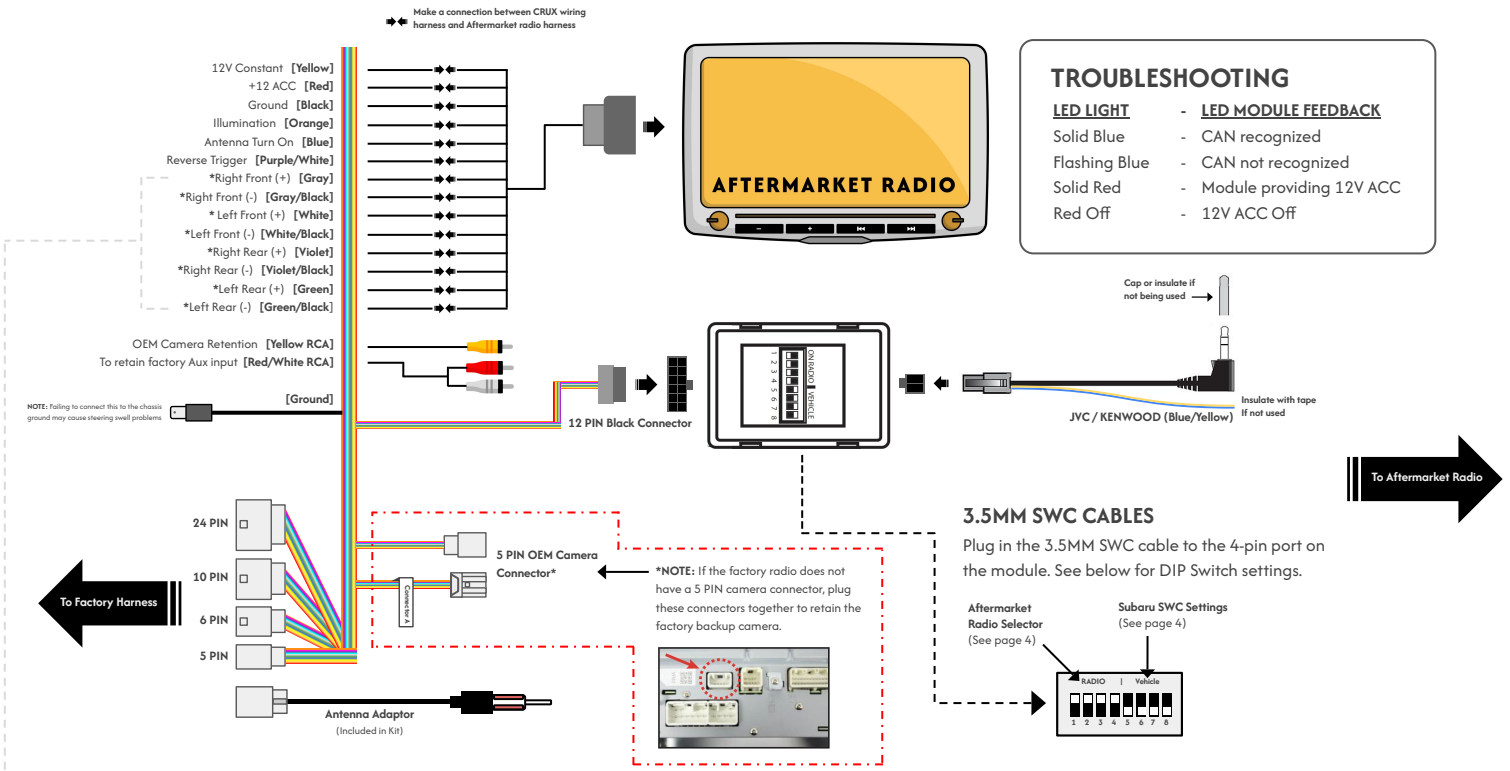
Antenna Adapter

SWC Cable

INSTALLATION DIAGRAM FOR ROCKFORD FOSGATE AMPLIFIED VEHICLES:



INSTALLATION DIAGRAM FOR NON-AMPLIFIED VEHICLES:



STARLINK RETENTION:

To retain StarLink, separate the StarLink module from the radio and reconnect the harness and antenna connectors to the module. Stuff the StarLink module back into the dash and secure it with zip ties or tape to prevent it from rattling.



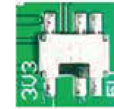
NOTE: The front speaker audio will be lost if the StarLink module is removed from the system.

DIP SWITCH SETTINGS:

AFTERMARKET RADIO DIP SWITCH SETTINGS:

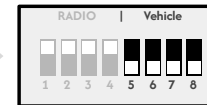
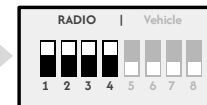
RADIO BRAND:	DIP#:	1	2	3	4
Atoto, Dual, Fahrenheit, Jensen, Nakamichi		OFF	ON	ON	ON
Pioneer, Power Acoustik, Soundstream		OFF	ON	ON	ON
Blaupunkt, Most off-brand Radio		OFF	ON	ON	ON
Alpine		OFF	OFF	OFF	OFF
Clarion		ON	ON	OFF	OFF
Kenwood		ON	ON	ON	ON
JVC		ON	OFF	ON	ON
BOSS, Old Sony		ON	OFF	OFF	OFF
New Sony (with CarPlay)		OFF	ON	OFF	OFF
SWC Learning Radios*		ON	OFF	OFF	ON
New Boss		ON	OFF	ON	OFF

SWC TROUBLESHOOTING OPTION



Located internally, need to take plastic casing off module

If Steering Wheel Controls don't work or work properly, please switch internal DIP switch from 3v3 to 5v as shown in picture above.



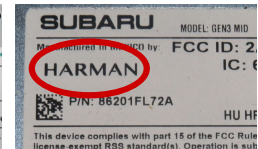
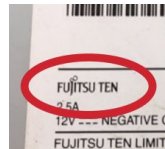
Troubleshooting for SWC Learning Radios

NOTE: For Atoto, Blaupunkt, Dual, Fahrenheit, Nakamichi, Power Acoustik, Soundstream, and most off-brand radios. Check the aftermarket radio's manual to see if the SWC buttons need to be programmed

** For SWC Learning Radios specific steps are required. Please scan the QR code on the right.*

SUBARU STEERING WHEEL CONTROL DIP SWITCH SETTINGS:

SUBARU	DIP#:	5*	6*	7*	8*
Fujitsu Ten made Radio		ON	OFF	OFF	ON
Clarion made Radio		OFF	ON	OFF	ON
Harman made Radio		ON	ON	OFF	OFF



3.5MM SWC CABLE:

Plug in the 3.5MM to 4-PIN SWC cable to the SWC module and the 3.5MM plug to the aftermarket radio SWC port.
NOTE: Insulate the Blue/Yellow wire or 3.5MM plug if not being used.

For aftermarket radios that have wires for SWC connections, cut off the 3.5mm plug on the Crux SWC Cable (option B) and connect the SWC wires as follows:

Note that there are some radios that only have SWC1 and SWC2, in this case "shield" does not need to be connected.



VEHICLE APPLICATIONS:

YEARS	MODEL	YEARS	MODEL	YEARS	MODEL
*2019 - 2022	ASCENT	2015 - 2019	FORESTER	*2018 - 2022	LEGACY
2017 - 2020	BRZ	*2019 - 2022	FORESTER	2015 - 2017	OUTBACK
2015	XV CROSSTREK	2016	IMPREZA	*2018 - 2022	OUTBACK
2016 - 2018	CROSSTREK	*2017 - 2022	IMPREZA	2019 - 2021	WRX / STI
*2018 - 2022	CROSSTREK	2015 - 2017	LEGACY		

NOTE: *Phone pick up and hang up buttons will be reversed.